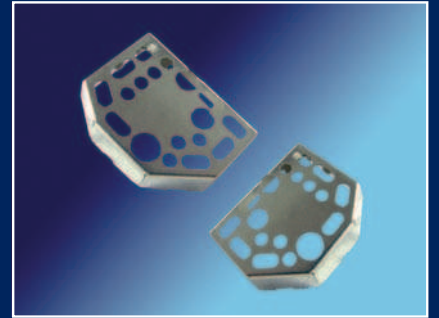
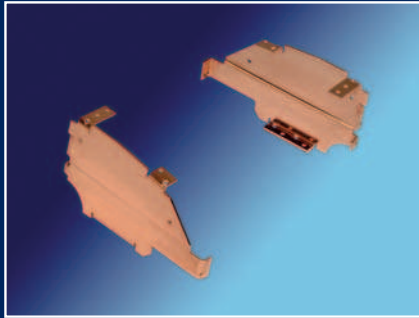
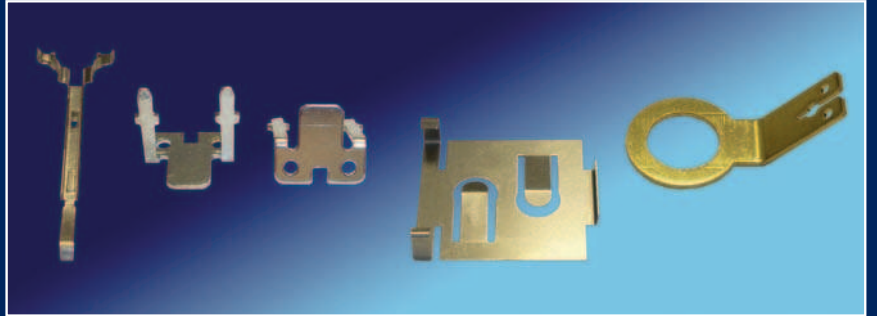


	<p>Stanzteile Pièces étampées Stamping parts</p>	5.002
	<p>Rohrteile Pièces en tube Tube parts</p>	5.003
	<p>Kunststoffteile Pièces en injection plastique Plastic injection moulding parts</p>	5.004
	<p>Drahtteile Pièces en fil Wire parts</p>	5.005
	<p>Drehteile Pièces de décoltage Turned parts</p>	5.006
	<p>Profil sägen Sciage de profil Profile sawing</p>	5.007
	<p>Montagearbeiten Travaux d'assemblage Assembly work</p>	5.008
	<p>Verpackungsarbeiten Travaux d'emballage Packaging work</p>	5.009
	<p>Werkzeugbau Atelier d'outillage Tool manufacture</p>	5.010
	<p>Materialien und Oberflächen Matières et surfaces Materials and surfaces</p>	5.011
	<p>Technische Unterlagen Documentation technique Technical documentation</p>	5.012
	<p>Artikelnummerverzeichnis Registre numéro d'article Article number index</p>	5.016



**Stanzteile**  
**Pièces étampées**  
**Stamping parts**



[www.vogtshop.ch](http://www.vogtshop.ch)

**Spezialitäten:**

Materialdicke min. 0.10mm - max. 2mm

Fläche max. 80mm x 50mm

Material: Kupfer, Messing, Bronze, Neusilber, Aluminium, Stahl, rostfreier Stahl

**Spécialités:**

Epaisseur min. 0.10mm - max. 2mm

Surface max. 80mm x 50mm

Matière: cuivre, laiton, bronze, maillechort, aluminium, acier, acier inox

**Specialized in:**

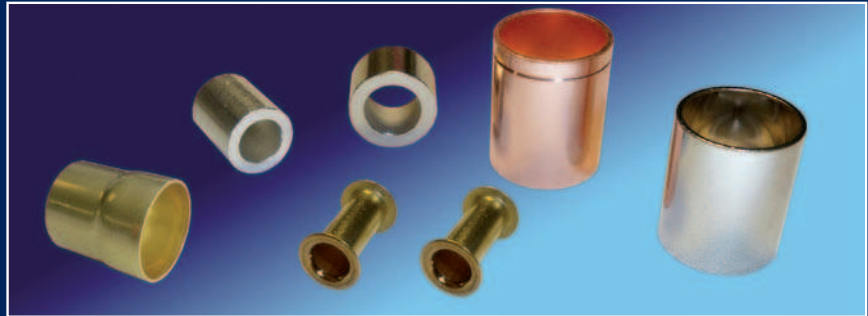
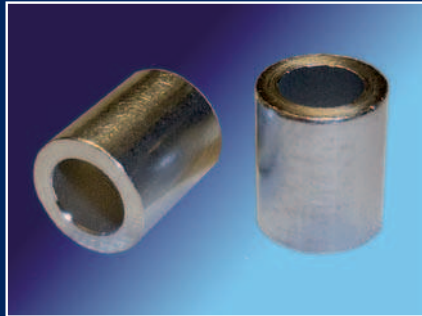
Material thickness min. 0.10mm - max. 2mm

Surface max. 80mm x 50mm

Material: copper, brass, bronze, german silver, aluminium, steel, stainless steel



Rohrteile  
Pièces en tube  
Tube parts



[www.vogtshop.ch](http://www.vogtshop.ch)

**Spezialitäten:**

Durchmesser min.  $\varnothing$  0.80mm - max.  $\varnothing$  33mm

Längen min. 2mm - max. 500mm

doppelseitige Bearbeitung auf Anfrage

Material: Kupfer, Messing, Aluminium, Stahl, rostfreier Stahl, Neusilber

**Spécialités:**

diamètre ext. min.  $\varnothing$  0.80mm - max.  $\varnothing$  33mm

Longueur min. 2mm - max. 500mm

Usinage des doubles côtés sur demande

Matières: cuivre, laiton, aluminium, acier, acier inox, argentan

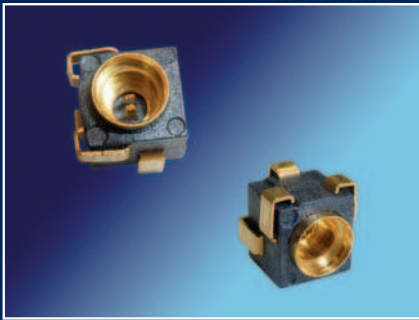
**Specialized in:**

diameter ext. min.  $\varnothing$  0.80mm - max.  $\varnothing$  33mm

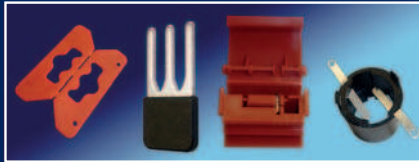
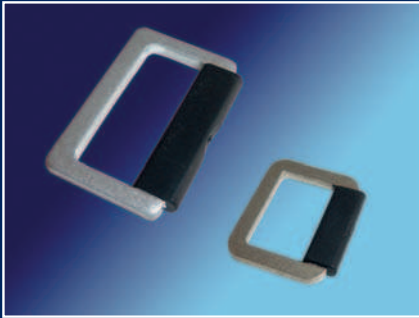
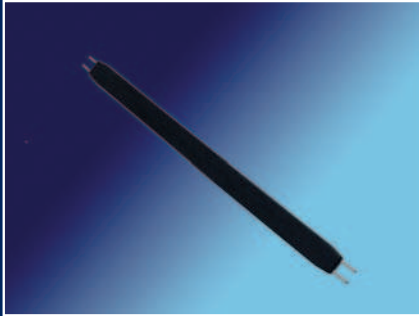
length min. 2mm - max. 500mm

Processing on both ends on request

Materials: copper, brass, aluminium, steel, stainless steel, german silver



**Kunststoffteile**  
**Pièces en injection plastique**  
**Plastic injection moulding parts**



[www.vogtshop.ch](http://www.vogtshop.ch)

**Spezialitäten:**

Eigener Werkzeugbau  
 Spritzgewicht max. 205g  
 Material: Thermoplaste, Elastomere

**Spécialités:**

Notre propre fabrication d'outils  
 Poids de la matière injectée max. 205g  
 Matière: thermoplastiques, élastomères

**Specialized in:**

Our own tool manufacture  
 Shot weight max. 205g  
 Material: thermoplasts, elastomers



Drahtteile  
Pièces en fil  
Wire parts



[www.vogtshop.ch](http://www.vogtshop.ch)

**Spezialitäten:**

Runddrähte min.  $\varnothing$  0.5 mm - max.  $\varnothing$  2.5 mm und eine Gesamtlänge von max. 20 mm  
Vierkantdrähte min. 0.63 mm - max. 1.14 mm und eine Gesamtlänge von max. 70 mm  
Material: Messing, Bronze

**Spécialités:**

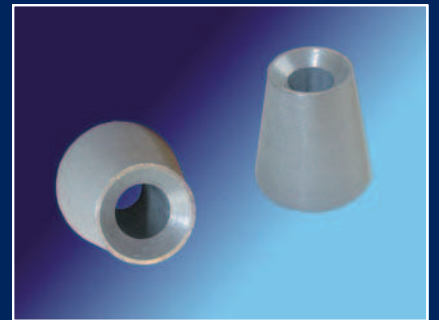
Files rondes min.  $\varnothing$  0.5 mm - max.  $\varnothing$  2.5 mm et une longueur max. du 20 mm  
Files carré min. 0.63 mm - max. 1.14 mm et une longueur max. du 70 mm  
Matière: laiton, bronze

**Specialized in:**

Round wires min.  $\varnothing$  0.5 mm - max.  $\varnothing$  2.5 mm and length max. 20 mm  
Square wires min. 0.63 mm - max. 1.14 mm and length max. 70 mm  
Material: brass, bronze



**Drehteile**  
**Pièces de décoltage**  
**Turned parts**



[www.vogtshop.ch](http://www.vogtshop.ch)

**Spezialitäten:**

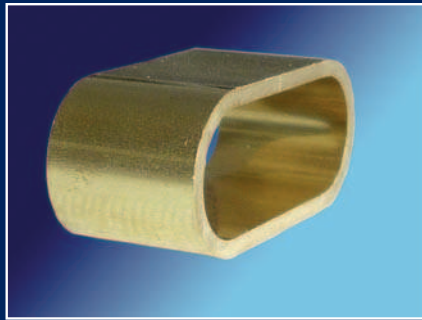
Stahl, Rostfreier Stahl, Messing, Kupfer, Aluminium  
 Andere Materialien auf Anfrage

**Spécialités:**

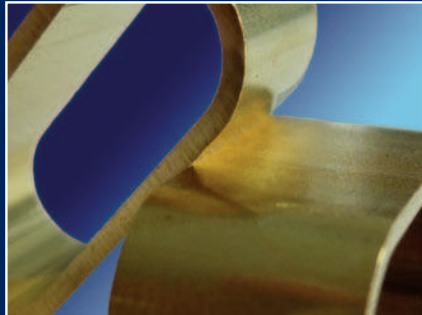
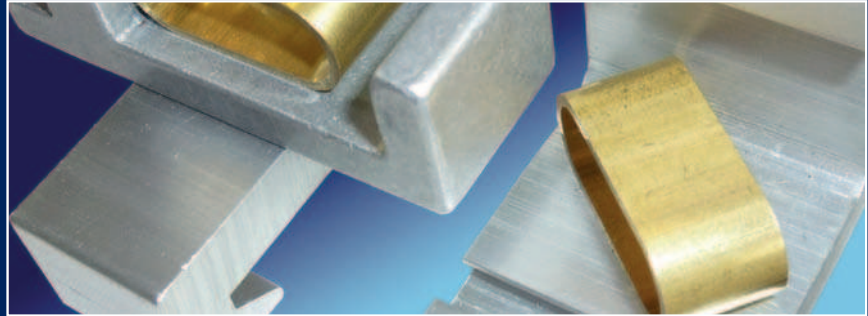
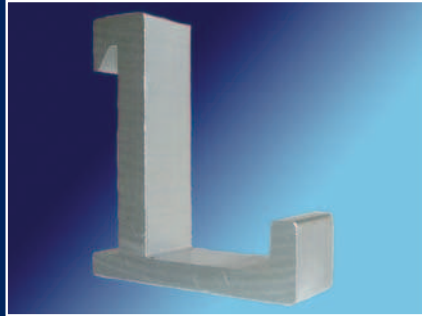
Acier, Acier inox, Laiton, cuivre, aluminium  
 Autres Matèrièreres en demande

**Specialized in:**

Steel, Stainless steel, Brass, Copper, Aluminium  
 Other Materials on request



Profil sägen  
Sciage de profils  
Profile sawing



[www.vogtshop.ch](http://www.vogtshop.ch)

**Spezialitäten:**

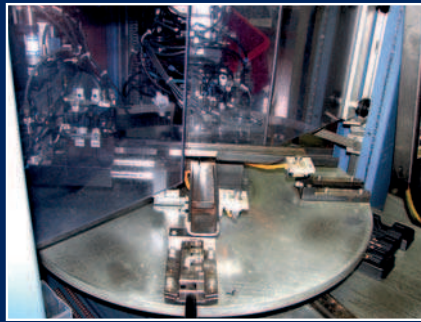
Messing  
Aluminium  
Andere Materialien auf Anfrage

**Spécialités:**

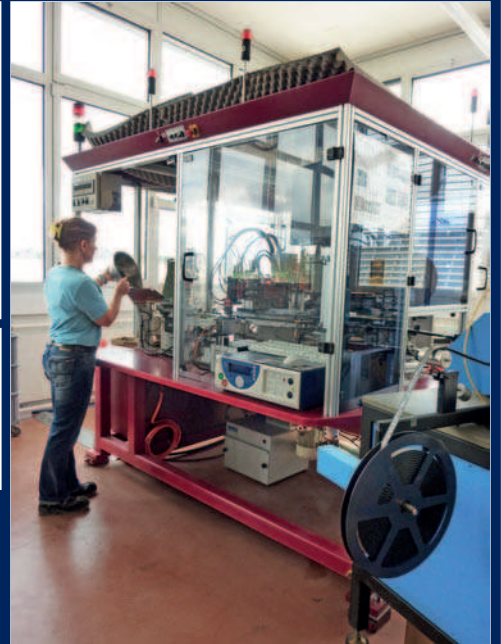
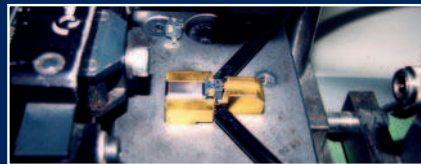
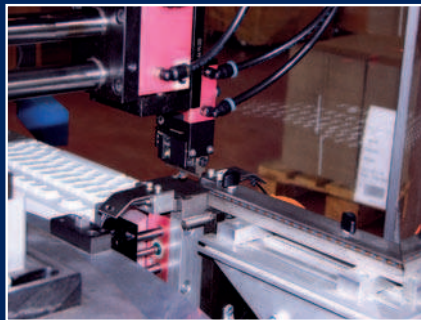
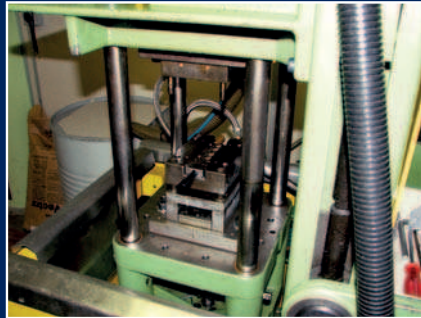
Laiton  
Aluminium  
Autres Matèrieres en demande

**Specialized in:**

Brass  
Aluminium  
Other Materials on request



**Montagearbeiten**  
**Travaux d'assemblage**  
**Assembly work**



[www.vogtshop.ch](http://www.vogtshop.ch)

**Spezialitäten**

Gerne bieten wir Ihnen ganze Baugruppenmontagen an. Je nach Losgröße machen wir dies von Hand oder mit Automaten.

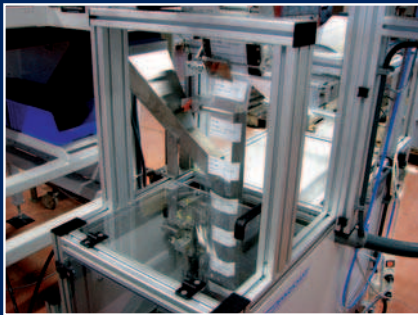
**Spécialités**

Nous sommes heureux de vous offrir un ensemble complet. Selon la taille du lot que nous faisons cela à la main ou à la machine.

**Specialized in**

We are pleased to offer you a full assembly. Depending on your quantity we do this by hand or machine.

## Verpackungsarbeiten Travaux d'emballage Packaging work



[www.vogtshop.ch](http://www.vogtshop.ch)

### Spezialitäten

Kundenspezifische Mengen  
Kundenspezifische Etiketten  
Kundenspezifische Beutel  
SMD Blistergurtung

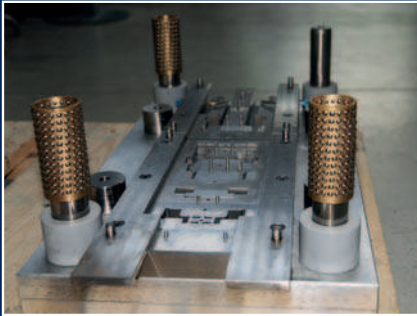
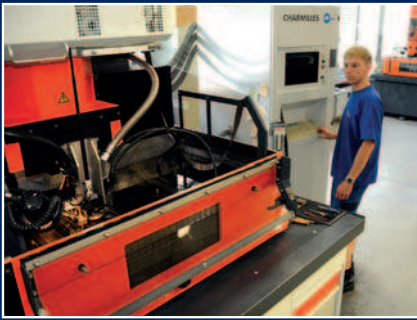
### Spécialités

Quantités personnalisés  
étiquettes spéciales  
sachet spéciales  
bande blister SMD

### Specialized in

Customized quantities  
Customized labels  
Customized bags  
SMD blister tape

**Werkzeugbau**  
**Atelier d'outillage**  
**Tool manufacture**



[www.vogtshop.ch](http://www.vogtshop.ch)

**Spezialitäten:**

Stanzwerkzeuge  
 Spritzgiessformen  
 Vorrichtungsbau

**Spécialités:**

Outils de découpage  
 Moules à injection  
 manufacture de mécanisme

**Specialized in:**

Stamping tools  
 Injection moulding tools  
 jig manufacturing

## Werkstoffe und Oberflächen- behandlungen

## Matières et traitements de surface

## Materials and surface-platings

Werkstoffe:	Code	Matières:	Code	Materials:	Code
AL = Aluminium	( 1 )	AL = aluminium	( 1 )	AL = aluminium	( 1 )
BE = Berylliumkupfer	( 2 )	BE = cuivre béryllium	( 2 )	BE = beryllium copper	( 2 )
BZ = Bronze	( 2 )	BZ = bronze	( 2 )	BZ = bronze	( 2 )
CN = Cupro-Nickel	( 3 )	CN = nickel cuivreux	( 3 )	CN = cuprous nickel	( 3 )
CU = Kupfer	( 4 )	CU = cuivre	( 4 )	CU = copper	( 4 )
FS = Federstahl	( 5 )	FS = acier ressort	( 5 )	FS = spring steel	( 5 )
MS = Messing	( 6 )	MS = laiton	( 6 )	MS = brass	( 6 )
NS = Neusilber	( 7 )	NS = maillechort	( 7 )	NS = german silver	( 7 )
RF = rostfreier Stahl	( 8 )	RF = acier inox	( 8 )	RF = stainless steel	( 8 )
ST = Stahl	( 9 )	ST = acier	( 9 )	ST = steel	( 9 )
NI = Nickel	( 0 )	NI = nickel	( 0 )	NI = nickel	( 0 )

Oberflächenbehandlungen:	Code	Traitements de surface:	Code	Surface-platings:	Code
bl = blank	( 0 )	bl = brut	( 0 )	bl = clean	( 0 )
ag = versilbert	( 1 )	ag = argenté	( 1 )	ag = silver-plated	( 1 )
au = vergoldet	( 2 )	au = doré	( 2 )	au = gold-plated	( 2 )
br = brüniert	( 3 )	br = noirci	( 3 )	br = burnished	( 3 )
sn = reinverzinnt reflow	( 4 )	sn = étamé pur reflow	( 4 )	sn = pure tin-plated reflow	( 4 )
ni = vernickelt	( 5 )	ni = nickélé	( 5 )	ni = nickel-plated	( 5 )
op = optalloy veredelt	( 6 )	op = traitement optalloy	( 6 )	op = optalloy-plated	( 6 )
sn = reinverzinnt	( 7 )	sn = étamé pur	( 7 )	sn = pure tin-plated	( 7 )
sn = reinverzinnt lötlbar	( 8 )	sn = étamé pur soudable	( 8 )	sn = pure tin-plated solderable	( 8 )
zn = verzinkt	( 9 )	zn = zingué	( 9 )	zn = zinc-plated	( 9 )

Werkstoffe:	Matières:	Materials:
HP = Hartpapier	HP = papier dur	HP = hard paper
PR = Pressspan	PR = pressspan	PR = pressboard
PA = Polyamid	PA = polyamide	PA = polyamid
PC = Polycarbonat	PC = polycarbonate	PC = polycarbonate
PE = Polyäthylen	PE = polyéthylène	PE = polyethylene
PP = Polypropylen	PP = polypropylène	PP = polypropylene
PS = Polystyrol	PS = polystyrène	PS = polystyrene
PV = PVC	PV = PVC	PV = PVC
TF = PTFE (Polytetrafluorethylen)	TF = PTFE (polytétrafluoréthylène)	TF = PTFE (polytetrafluorethylene)
HDPE = High Density Polyethylen	HDPE = High Density Polyethylen	HDPE = High Density Polyethylen

**Tabelle über axiale  
Zerreissfestigkeit von  
Rohrrieten in N/mm<sup>2</sup>**  
DIN 7340, ausgenommen\*

Werkstoff:

AL = Aluminium  
CU = Kupfer  
MS = Messing  
ST = Stahl

**Tableau des valeurs de  
résistance axiale des rivets  
tubulaire en N/mm<sup>2</sup>**  
DIN 7340, \*excepté

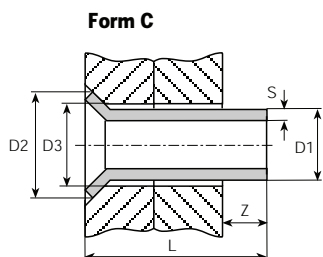
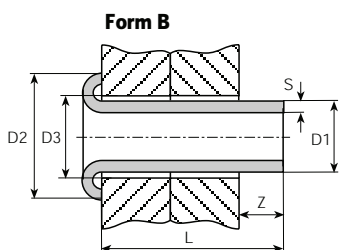
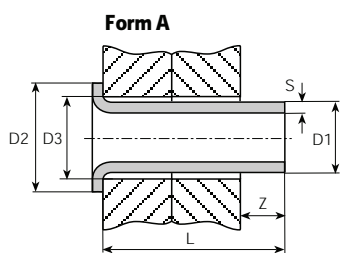
Matière:

AL = aluminium  
CU = cuivre  
MS = laiton  
ST = acier

**Table on the axial  
tensile strength of  
tubular rivets in N/mm<sup>2</sup>**  
DIN 7340, \*excepted

Material:


AL = aluminium  
CU = copper  
MS = brass  
ST = steel


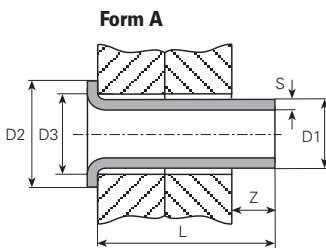
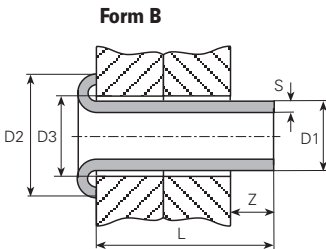
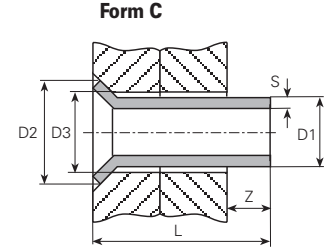


Z  
Richtwert zur Bestimmung der Nietlänge.  
Durch Versuche genau ermitteln.

Z  
Valeur indicative pour déterminer la longueur  
du rivet.  
A fixer exactement par essais.

Z  
Approximate value for determination of the  
rivet length.  
To determine by attempts.

Schaft-ø ø de la tige Shank-ø <b>øD1</b> mm	Längenbereich Longueur Length <b>L</b> mm		Kopf-ø ø tête Head-ø <b>øD2</b> mm	Nietüberstand Saillie Surplus <b>Z</b> mm	Wanddicke Epaisseur paroi Thickness of wall <b>S</b> mm	Zerreissfestigkeit axial in N/mm <sup>2</sup> Valeurs de résistance axial en N/mm <sup>2</sup> Tensile strength of tubular rivets N/mm <sup>2</sup>			
						AL	CU	ST	MS
<b>0.8*</b>	0.8 – 20	0.9	1.3	0.8 – 0.9	0.2	30	80	140	150
<b>1</b>	0.8 – 25	1.1	1.6	0.8 – 1	0.15	30	100	150	160
					0.2	40	130	190	200
<b>1.2</b>	0.8 – 50	1.3	2	0.9 – 1.1	0.15	40	120	180	190
					0.2	60	160	230	250
<b>1.3*</b>	0.8 – 50	1.4	2.1	0.9 – 1.1	0.2	60	170	250	260
<b>1.4*</b>	0.8 – 50	1.5	2.2	1 – 1.1	0.2	70	190	280	290
<b>1.5</b>	1 – 50	1.6	2.5	1.1 – 1.2	0.15	60	160	230	240
					0.2	70	200	300	310
					0.25	90	260	390	410
					0.3	100	280	420	430
<b>1.6*</b>	1 – 50	1.7	2.6	1.1 – 1.3	0.2	80	220	330	340
					0.25	90	240	350	360
<b>1.7*</b>	1 – 50	1.8	2.7	1.2 – 1.4	0.2	90	240	350	360
					0.25	110	300	440	460
<b>2</b>	1.2 – 80	2.2	3.2	1.2 – 1.5	0.2	110	280	420	430
					0.25	130	320	500	520
					0.3	150	420	600	630
					0.35	160	450	670	690
					0.4	180	580	760	780
					0.5	200	720	900	920
<b>2.2*</b>	1.2 – 80	2.4	3.5	1.3 – 1.6	0.2	120	320	470	480
					0.25	140	380	570	580
					0.3	160	450	660	680
<b>2.3*</b>	1.2 – 80	2.5	3.7	1.4 – 1.7	0.25	150	400	600	610
					0.3	170	470	700	720
<b>2.4*</b>	1.2 – 80	2.6	3.8	1.4 – 1.8	0.25	150	420	630	640
					0.3	180	500	730	750
<b>2.5</b>	1.5 – 100	2.7	4	1.4 – 2	0.15	100	280	410	420
					0.2	130	360	540	550
					0.25	160	440	660	670
					0.3	190	540	780	800
					0.4	240	680	1010	1030
<b>2.6*</b>	1.5 – 100	2.8	4	1.5 – 2	0.2	140	380	560	570
					0.25	170	460	680	700
					0.4	250	690	1020	1050
<b>2.8*</b>	1.5 – 100	3	4.3	1.6 – 2.1	0.3	210	590	870	900
					0.35	260	730	1080	1110
<b>3</b>	1.5 – 160	3.2	4.5	1.8 – 2.2	0.2	160	440	650	670
					0.25	200	540	800	820
					0.3	230	660	970	1000
					0.35	260	730	1080	1110
					0.4	290	820	1250	1280
<b>3.2*</b>	1.5 – 160	3.4	4.8	1.8 – 2.2	0.5	350	1020	1510	1540
					0.2	170	470	700	720

	Schaft- $\emptyset$ $\emptyset$ -de la tige Shank- $\emptyset$ <b><math>\emptyset D1</math></b> mm	Längenbereich Longueur Length <b>L</b> mm	 <b><math>\emptyset D3</math></b> mm	Kopf- $\emptyset$ $\emptyset$ tête Head- $\emptyset$ <b><math>\emptyset D2</math></b> mm	Nietüberstand Saillie Surplus <b>Z</b> mm	Wanddicke Epaisseur paroi Thickness of wall <b>S</b> mm	Zerreihsfestigkeit axial in N/mm <sup>2</sup> Valeurs de résistance axial en N/mm <sup>2</sup> Tensile strength of tubular rivets N/mm <sup>2</sup>			
							<b>AL</b>	<b>CU</b>	<b>ST</b>	<b>MS</b>
<b>Form A</b> 	<b>3.5*</b>	1.5 – 160	3.7	5.3	1.9 – 2.3	0.25 0.3 0.5	230 270 430	640 780 1220	940 1160 1800	970 1200 1840
	<b>3.8*</b>	1.5 – 160	4	5.8	1.9 – 2.4	0.3	300	830	1220	1250
	<b>4</b>	1.5 – 160	4.3	6	2 – 2.5	0.2 0.25 0.3 0.4 0.5 0.75 0.8	220 270 300 400 500 720 730	600 740 900 1180 1400 2000 2010	880 1090 1360 1710 2070 2930 2970	910 1120 1400 1760 2120 3000 3060
<b>Form B</b> 	<b>4.5*</b>	1.5 – 160	4.8	6.8	2 – 2.7	0.25 0.3 0.5	300 360 570	840 990 1580	1240 1470 2330	1270 1500 2390
	<b>4.8*</b>	1.8 – 160	5.1	7.2	2.2 – 3	0.3 0.4 0.5	380 500 610	1060 1380 1690	1570 2050 2500	1610 2100 2570
	<b>5</b>	2 – 160	5.3	7.5	2.5 – 3.5	0.25 0.35 0.4 0.5 0.75 1.0	340 460 500 640 900 1150	930 1280 1540 1770 2600 3300	1380 1890 2180 2620 3860 5000	1420 1940 2250 2690 3950 5100
<b>Form C</b> 	<b>6</b>	2 – 160	6.4	9	2.5 – 4	0.25 0.3 0.5 0.75 1.0	410 480 820 1100 1400	1130 1340 2250 3200 4100	1670 1990 3350 4750 6000	1720 2040 3450 4850 6200
	<b>7*</b>	2 – 160	7.4	10.5	2.8 – 4	0.5	920	2550	3780	3880
	<b>7.5*</b>	2.5 – 160	7.9	11.5	3 – 4	0.25	510	1420	2110	2160
	<b>8</b>	2.5 – 160	8.4	12	3 – 4	0.5	1060	3100	4550	4700
	<b>9*</b>	2.5 – 160	9.4	13.5	3.2 – 4	0.3 1.0	740 2260	2050 6280	3040 9300	3120 9550
<b>10</b>	3 – 160	10.5	15	3.5 – 4	0.5	1400	3900	5730	5900	

Notwendige Druckleistung zum Nieten =  
 Zerreihsfestigkeit + mind. 20 %

Rohrnieten werden in jeder beliebigen Länge hergestellt. Bis etwa 5 mm Schaft- $\emptyset$  reisst eine Rohrniete stets im Schaft. Mit steigendem Schaft- $\emptyset$  treten zunehmend Kopfreisser oder Aufstülpungen des Kopfes auf. Die Kopfform (A oder B) hat praktisch keinen Einfluss auf die Festigkeit der Rohrnietenverbindung.

Die Werte für die Scherfestigkeit liegen 20 - 40 % über denjenigen der Zerreihsfestigkeit.

Aus Sicherheitsgründen empfiehlt es sich, Rohrnietverbindungen maximal mit 20 - 25 % der jeweils obenstehenden Tabellenwerte zu belasten.

Wir dienen Ihnen gerne mit weiteren Angaben und stehen auch bei Nietproblemen zu Ihrer Verfügung.

Pression de rivetage = Résistance à la traction + min. 20 %

Nous fabriquons des rivets à chaque longueur désirée. Jusqu'aux environs de 5 mm de diamètre, les rivets tubulaires se fissurent toujours dans la tige. Au-delà, cela se produit plutôt au niveau de la tête. Les formes (A ou B) ne modifient pas la tenue mécanique des rivets.

La résistance au cisaillement représente 20 à 40 % des valeurs indiquées dans le tableau ci-dessus.

Pour des raisons de sécurité, il est recommandé de ne pas contraindre le rivet de plus de 20 à 25 % des valeurs indiquées dans le tableau ci-dessus.

Nous nous tenons à votre disposition pour tous compléments d'information.

Riveting pressing power = Tensile strength + 20 % at least

We produce tubular rivets of any desired length. Up to a shank- $\emptyset$  of 5 mm, the tubular rivet breaks always in the shank. By increasing the shank- $\emptyset$ , the head will break or turn upside down. The shape of the rivet heads (A or B) has no influence concerning the firmness of the rivetjunction.

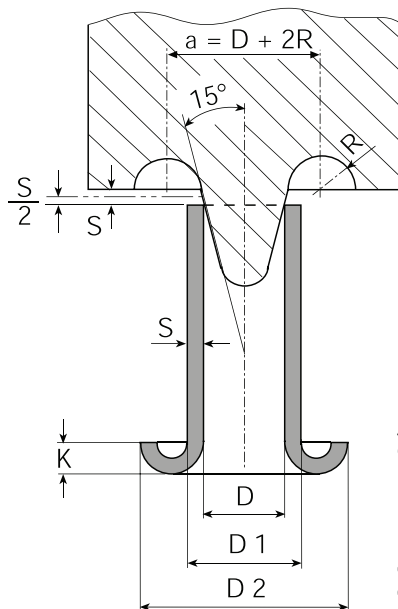
The values for the shearing strength are 20 - 40 % higher placed.

For reasons of safety it is recommended to stress max. tension of 20 - 25 % of the above values.

We should be pleased to assist you in your riveting problems. Please do not hesitate to contact us for any further information.

## Richtlinien für Niettechnik

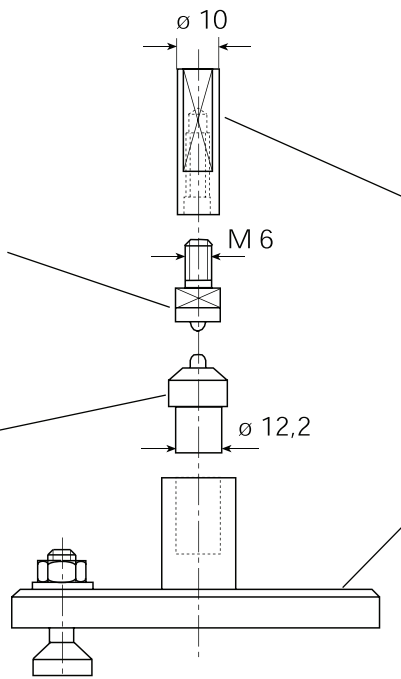
für Hohnieten  
Rohnieten  
Nietlösen



Abmessungen richtig  
Gute Bördelung

Dimensions justes  
Rivetage propre

Correct measures  
Correct riveting

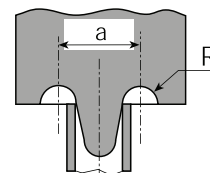


Nieteinsatz-Oberteil  
OT siehe Seite 4.029  
Pièce de rechange partie supérieure  
OT voir page 4.029  
Insert for pliers upper part  
OT see page 4.029

Nieteinsatz-Unterteil  
UT siehe Seite 4.029  
Pièce de rechange partie inférieure  
UT voir page 4.029  
Insert for pliers lower part  
UT see page 4.029

## Technical instructions for riveting

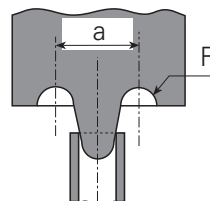
for Hollow rivets  
Tubular rivets  
Eyelet terminals



Falsch, a oder R zu klein,  
Nietschaft wird gestaucht

Faux, a ou R trop petit,  
Tige se déforme

False, a or R too small,  
Deformation of shank



Falsch, a oder R zu gross,  
Kopf reisst

Faux, a ou R trop grand,  
La tête casse

False, a or R too big,  
Head burst

Nietwerkzeug-Aufnahme  
für Pressen siehe Seite 4.028

Porte-outil pour nos pièces  
de rechange à river pour  
presses voir page 4.028

Pick-up attachment  
for our riveting tools  
for presses see page 4.028

## Eigenschaften der Isolierhülsen

### Polyamid

Beständig gegen stark wechselnde Belastungen und Temperaturen  
-55°C bis +105°C,  
Korrosion und Vibration.

Durchschlagfestigkeit:  
3000 Volt, 50 Hz, bzw.  
2000 Volt, 400 Hz.

Unempfindlich gegen Alkohol, Hydrauliköl, Schmieröl, Hydraulikflüssigkeit auf Ester-Basis, Düsentreibstoff, Chlorbrommethan, Clophen, Trafoöl, Salznebel, Pilzbildung etc.

Die Isolierhülsen haben eine Kennfarbe, die den Querschnittsbereich bezeichnet. Zur richtigen Verwendung haben die Ansetzgeräte die gleiche Kennfarbe.

### PVC

Beständig bei Temperaturen von  
-10°C bis +75°C.

Durchschlagfestigkeit:  
3000 Volt, 50 Hz, bzw.  
2000 Volt, 400 Hz.

Unempfindlich gegen Mineralöle, Paraffin, Petroleum, Seewasser, Fixiersalz, Akkusäure, Natronlauge, Salzsäure.

Die Isolierhülsen haben eine Kennfarbe, die den Querschnittsbereich bezeichnet. Zur richtigen Verwendung haben die Ansetzgeräte die gleiche Kennfarbe.

## Caractéristiques des manchons isolants

### Polyamide

Ils sont insensibles aux variations importantes et rapides du courant et de la température  
-55°C à +105°C,  
à la corrosion et aux vibrations.

Très bonne résistance diélectrique:  
3000 Volts, 50 périodes et  
2000 Volts, 400 périodes.

Résistent à l'alcool, aux huiles, aux liquides à base d'ester, aux carburants d'avion, au chlorobromure de méthane, au clophène, aux huiles de transformateurs, au brouillard salin, à la formation de moisissures, etc.

Les manchons isolants ont une couleur distinctive qui indique la section. Pour permettre une utilisation correcte, les pinces ont les mêmes repères.

### PVC

Ils sont insensibles aux variations de température entre -10°C à +75°C.

Résistance diélectrique:  
3000 Volts, 50 périodes ou  
2000 Volts, 400 périodes.

Résistent aux huiles minérales, paraffine, pétrole, eau de mer, fixateurs, acide pour accumulateurs, soude caustique, acide chlorhydrique.

Les manchons isolants ont une couleur distinctive qui indique la section. Pour permettre une utilisation correcte, les pinces ont les mêmes repères.

## Qualities of insulation sleeves

### Polyamid

Resistant to wide variations in load and temperature  
-55°C up to +105°C,  
corrosion and vibration.

High dielectric strength:  
3000 Volts, 50 c/sec. or  
2000 Volts, 400 c/sec.

Chemically resistant to alcohol, hydraulic oils, lubricating oils, hydraulic fluids on ester basis, kerosene, methane chlorobromide, clophene, transformer oil, salt spray, fungus etc.

The insulating sleeves are colour coded according to the wire section range. To avoid confusion, the crimping tools are correspondingly colour coded.

### PVC

Temperature range:  
-10°C up to +75°C.

Dielectric strength:  
3000 Volts, 50 c/sec. or  
2000 Volts, 400 c/sec.

Chemically resistant to mineral oils, kerosene, methylated spirit, sea water, fixing salt, battery acid, caustic soda, hydrochloric acid.

The insulation sleeves are colour coded to identify the wire size. To ensure a correct crimp connection the crimping tools bear the same colour code.

Art.No.	Seite/Page	Art.No.	Seite/Page	Art.No.	Seite/Page	Art.No.	Seite/Page	Art.No.	Seite/Page
01001g.68	2.005	01016l.21	2.012	03785t05.68	2.084	1001d.20	2.033	1004q.60	2.007
01001k.28	2.003	01016l.61	2.012	03785w08.68	2.085	1001e.20	2.033	1004r.20	2.018
01001l.68	2.002	01016r.61	2.015	0378708.61	2.087	1001f.60	2.033	1004s.20	2.005
01001p.68	2.002	01016s.68	2.011	0378905.68	2.086	1001g.60	2.005	1004t.60	2.005
01001q.68	2.002	01016t.68	2.016	0378908.61	2.087	1001h.20	2.033	1004u.60	2.076
01001s.68	2.003	01016v.68	2.015	03789a08.68	2.086	1001k.20	2.003	1004v.20	2.005
01001u.28	2.004	01017f.61	2.012	03789c05.68	2.087	1001l.60	2.002	1004w.20	2.003
01001v.28	2.004	01017s.28	2.015	03789c08.61	2.088	1001m.20	2.002	1004x.60	2.013
01001w.68	2.004	01018.28	2.013	03789d08.68	2.087	1001p.60	2.002	1005b.20	2.005
01001y.68	2.002	01018.61	2.013	03789f08.68	2.087	1001q.60	2.002	1005c.60	2.022
01002a.28	2.006	0101806.68	2.013	03789i08.68	2.088	1001s.60	2.003	1005d.20	2.022
01002b.68	2.007	01019.28	2.017	0382505.28	2.090	1001t.20	2.018	1005e.20	2.003
01002d.61	2.008	01019a.68	2.017	0382505.68	2.090	1001u.20	2.004	1005f.20	2.006
01002f.28	2.005	01021.68	2.009	0382508.21	2.091	1001v.20	2.004	1005g.22	2.045
01002k.68	2.003	01022l.68	2.076	0382508.61	2.091	1001w.60	2.004	1005h.20	2.010
01002l.68	2.005	01023b.28	2.076	03825c08.68	2.091	1001x.60	2.018	1005i.60	2.018
01002m.28	2.006	01023l.68	2.076	0382608.68	2.091	1001y.60	2.002	1005p.60	2.034
01002m.68	2.006	01023s.68	2.076	03826a.28	2.090	1001z.20	2.033	1005r.20	2.003
01002m06.28	2.006	01080a.68	2.041	03826p08.68	2.091	10020k.68	2.020	1005s.60	2.034
01002n.68	2.019	01080g.68	2.040	0382708.68	2.094	10020k06.60	2.020	1005t.70	2.022
01002p.68	2.007	01080m.68	2.041	03827b08.61	2.092	1002a.20	2.006	1005u.20	2.022
01002q.68	2.004	01080m08.62	2.041	03827b08.88	2.092	1002b.60	2.007	1005w.20	2.022
01002r.68	2.006	01080t.68	2.040	03827d.68	2.093	1002c.60	2.018	1005x.70	2.022
01002t.68	2.003	01080v.68	2.040	03827h.28	2.091	1002d.60	2.008	1006.60	2.008
01002w.28	2.005	01080x.68	2.041	03827k05.68	2.093	1002e.60	2.005	10060h	2.021
01003.68	2.008	01081b.68	2.039	03827k08.68	2.093	1002f.20	2.005	1006g.22	2.045
01003c.68	2.007	01081f.68	2.041	03827p08.28	2.093	1002g.60	2.018	1006h.60	2.004
01003d.68	2.008	01081l.68	2.039	03865l.68	2.100	1002h.20	2.005	1007a.20	2.013
01003e.61	2.008	01081s.68	2.042	03865p.68	2.100	1002k.60	2.003	1007a08.20	2.016
01003l.68	2.007	01099d.68	2.019	03865q.68	2.100	1002l.60	2.005	1007c.60	2.012
01003m.28	2.007	01099k.68	2.019	03865u.68	2.097	1002m.20	2.006	1007c06.60	2.013
01003u.28	2.014	01341r.28	2.044	03866a.28	2.098	1002m.60	2.006	1007d.60	2.012
01004a.28	2.003	0377108.68	2.082	03866a.61	2.098	1002m06.20	2.006	1009k.20	2.009
01004b.28	2.007	03773a05.28	2.080	03866b.28	2.099	1002n.60	2.018	1009l.20	2.011
01004c.68	2.004	03773a05.68	2.080	03866b.61	2.099	1002p.60	2.007	1011.60	2.009
01004l.68	2.015	03773a08.61	2.080	03866c.28	2.097	1002q.60	2.004	1013.60	2.014
01004m.68	2.016	03773b05.68	2.082	03866c.61	2.097	1002r.60	2.006	1013e.60	2.015
01004p.68	2.013	03773b08.68	2.082	03866f.68	2.099	1002s.20	2.031	1013s.60	2.015
01004q.68	2.007	03773c05.28	2.082	03866f.98	2.099	1002t.60	2.003	1014.60	2.019
01004s.28	2.005	03773c05.68	2.082	03866g.62	2.096	1002v.60	2.033	1015.20	2.010
01004t.68	2.005	03773k05.68	2.081	03866l.68	2.099	1002w.20	2.005	1015.60	2.011
01004u.68	2.076	03775a05.28	2.080	03866m.68	2.100	1002x05.60	2.033	101506.20	2.011
01004v.28	2.005	03775a05.68	2.080	03866p.68	2.096	1002x08.60	2.034	1015b.20	2.016
01004w.28	2.003	03775a08.28	2.081	03866s.28	2.100	1002z.20	2.034	1015c.20	2.014
01005b.20	2.005	03775a08.61	2.081	03866t.68	2.097	1003.60	2.008	1015d.60	2.009
01005c.61	2.022	03775b05.68	2.082	03866u.68	2.096	1003a.20	2.007	1015e.20	2.012
01005e.28	2.003	03775b08.61	2.083	03866x.68	2.099	1003ab.60	2.022	1015k.60	2.007
01005f.28	2.006	03775l08.28	2.081	03866z.68	2.096	1003b.20	2.007	1016a.20	2.014
01005h.28	2.010	03779.68	2.081	03867a.61	2.103	1003c.60	2.007	1016b.20	2.014
01005l.68	2.018	03779c.28	2.010	03867ab.68	2.101	1003d.60	2.008	1016b.60	2.015
01007a.21	2.013	03779h.21	2.011	03867b.28	2.102	1003e.60	2.008	1016c.60	2.011
01007a08.28	2.016	03779k.28	2.010	03867b.61	2.102	1003f.60	2.007	1016d.20	2.009
01007c.68	2.012	03779l.68	2.015	03867d.61	2.101	1003g.20	2.045	1016e.20	2.011
01007c06.68	2.013	03779r.28	2.010	03867d1.66	2.101	1003k.60	2.019	1016f.20	2.011
01009k.28	2.009	03779s.68	2.079	03867e.62	2.102	1003l.60	2.007	1016g.20	2.015
01009l.28	2.011	03779t.68	2.078	03867k.68	2.102	1003m.20	2.007	1016h.20	2.016
01011.61	2.009	0378005.28	2.078	03867l.68	2.101	1003p.20	2.034	1016k.60	2.014
01013.62	2.014	0378005.68	2.078	03868a.68	2.102	1003q.20	2.022	1016l.20	2.012
01013e.68	2.015	0378008.28	2.078	03868l.68	2.097	1003r.20	2.034	1016l.60	2.012
01013s.68	2.015	0378008.61	2.078	03868t.68	2.098	1003s.20	2.031	1016r.60	2.015
01015.22	2.010	0378010.68	2.081	1	4.002	1003t.60	2.018	1016s.60	2.011
01015.61	2.011	03780a05.61	2.081	10	4.002	1003u.20	2.014	1016t.60	2.016
0101506.28	2.011	03780a08.28	2.081	1000.20	2.018	1003v.60	2.034	1016v.60	2.015
01015b.28	2.016	03780a08.61	2.081	1000a.20	2.032	1003w.20	2.034	101760	2.012
01015c.28	2.014	03780b08.61	2.079	1000c.20	2.032	1003x.20	2.034	1017b.60	2.013
01015d.68	2.009	03780e08.68	2.079	1000d.20	2.032	1003y.60	2.026	1017d.20	2.016
01015e.28	2.012	03780l.68	2.079	1000e.20	2.032	1003z.20	2.034	1017h.20	2.013
01015k.68	2.007	03780s08.28	2.080	1000f.60	2.032	1004.60	2.008	1017s.20	2.015
01016a.28	2.014	03783f.68	2.087	1000g.20	2.032	10040t	2.021	1017w.20	2.019
01016b.28	2.014	03785a05.68	2.084	1000h.20	2.003	1004a.20	2.003	1018.20	2.013
01016b.68	2.015	03785a08.61	2.085	1000k.20	2.002	1004b.20	2.007	1018.60	2.013
01016c.68	2.011	03785c08.68	2.084	1000s.60	2.032	1004c.60	2.004	101806.20	2.013
01016d.28	2.009	03785h.68	2.083	1001.20	2.002	1004g.22	2.045	101806.60	2.013
01016e.28	2.011	03785k05.68	2.085	10012.60	2.020	1004h.60	2.003	1018e.60	2.035
01016f.28	2.011	03785k08.68	2.085	10013.60	2.020	1004k.60	2.008	1018k06.60	2.013
01016g.28	2.015	03785l08.68	2.085	1001b.20	2.033	1004l.60	2.015	1019.20	2.017
01016h.28	2.016	03785q05.68	2.083	1001b.60	2.033	1004m.60	2.016	1019a.60	2.017
01016k.68	2.014	03785q08.68	2.084	1001c.20	2.033	1004p.60	2.013	1019ab.60	2.019



Verbindungstechnik

# Artikelnummerverzeichnis

## Registre numéro d'article

### Article number index

Art.No.	Seite/Page	Art.No.	Seite/Page	Art.No.	Seite/Page	Art.No.	Seite/Page	Art.No.	Seite/Page
1019d.60	2.035	1042h	4.026	1047w08	4.027	106208	4.027	1095a.60	2.026
1019e.60	2.035	1042k	4.026	104805	4.027	1062a08	4.027	1095b.60	2.026
1019f.20	2.035	1042l	4.026	104808	4.027	1062d08	4.027	1095c.60	2.026
1019f.60	2.035	1042m	4.026	1048k	4.027	1062f08	4.027	1095d.60	2.026
1019h.60	2.035	1042p	4.026	1048l	4.027	106308	4.027	1095e.60	2.026
1019k.20	2.035	1042q	4.026	1048p	4.027	1064	4.026	1095g.60	2.026
1019m.60	2.035	1042r	4.026	1049	4.026	1066136.68	2.037	1095h.60	2.026
1019p.60	2.035	1042s	4.026	1049a	4.026	1066202.68	2.037	1096a.90	2.026
1019r.60	2.035	1042t	4.026	1049b	4.026	1066204.68	2.037	1096b.20	2.023
1019t.60	2.035	1042w	4.026	1049c	4.026	1066232.62	2.037	1098a.60	2.051
1019u.70	2.036	1043	4.026	1049d	4.026	1066236.68	2.037	1098b.60	2.051
1019v.60	2.036	1043b	4.027	1049f	4.026	1066302.68	2.037	1098c.60	2.051
1019w.70	2.036	1043c	4.026	1049k	4.026	1066304.68	2.037	1098d.60	2.052
1019x.70	2.036	1043d	4.026	1049l	4.026	1066336.68	2.037	1098e.60	2.052
1019y	2.021	1043g	4.026	1049p	4.026	1066402.68	2.037	1098f.60	2.052
1019z.70	2.036	1043h	4.026	1049s	4.026	1066502.68	2.037	1098g.60	2.051
1020a.60	2.036	1043l	4.026	1049t	4.026	1066604.68	2.037	1098h.60	2.051
1021.60	2.009	1043m	4.026	1049u	4.026	106760	2.028	1098l.60	2.051
1022.60	2.017	1043s	4.026	1050	4.026	1068106.68	2.037	1098m.60	2.051
1022l.60	2.076	1043u	4.026	105006	4.026	1069118.68	2.038	1098p.90	2.052
1023.60	2.019	1043w	4.026	1050b	4.026	1069136.68	2.038	1098r.60	2.048
1023b.20	2.076	1044	4.026	1050d	4.026	1069236.68	2.038	1098s.40	2.052
1023l.60	2.076	1044b	4.026	1050f	4.026	1069305.68	2.038	1098t.60	2.052
1023m.60	2.077	1044c	4.026	1050k	4.026	1069336.68	2.038	1098u.60	2.052
1023p.60	2.076	1044c06	4.026	1050l	4.026	1070.60	2.075	1098w.60	2.051
1023r.60	2.077	1044g	4.026	1050l08	4.026	1071136.68	2.038	1098x.40	2.051
1023s.60	2.076	1044h	4.026	1050r	4.026	1072106.68	2.038	1099a.60	2.018
1024.60	2.019	1044k	4.026	1050s	4.026	1072172.68	2.038	1099b.60	2.018
1026b.60	2.045	1044p	4.026	1050w	4.026	1073.60	2.075	1099c.60	2.023
1026c.60	3.003	1044s	4.026	105105	4.027	1075.60	2.075	1099d.60	2.019
1026d.60	3.003	1044t	4.026	105108	4.027	1076136.68	2.037	1099e.60	2.024
1026e.60	3.003	104505	4.027	1051a	4.026	1076202.68	2.037	1099g.60	2.024
1027.90	2.024	104508	4.027	1051c	4.026	1076236.68	2.037	1099h.60	2.023
1027k.60	2.023	1045a	4.027	1051d	4.026	1076304.68	2.037	1099k.60	2.019
1029.60	2.025	1045b	4.027	1051f	4.026	1076336.68	2.037	1099m.60	2.019
102990.60	2.025	1045c	4.027	1051g	4.026	1076404.68	2.037	1099r.20	2.070
1030.60	2.026	1045d	4.027	1051k	4.027	107760	2.075	1099s.20	2.051
1031.60	2.025	1045e	4.026	1051k05	4.027	1078.60	2.075	1099w.20	2.070
1032.60	2.025	1045f	4.026	1051l	4.027	1080a.60	2.041	1099y.60	2.052
1034.60	2.025	1045h	4.027	1051m	4.026	1080b.20	2.042	11	4.002
1035	4.002	1045l08	4.027	1051q05	4.027	1080b.60	2.042	1100.60	2.074
1036.60	2.025	1045p08	4.027	1051q08	4.027	1080c.60	2.040	1104.60	2.077
1037	4.003	1045w05	4.027	1051s	4.026	1080e.60	2.041	1105.60	2.077
1038.60	2.025	1045w08	4.027	1051t	4.026	1080g.60	2.040	1120.60	2.075
1039.60	2.025	1046	4.027	1051u	4.027	1080h.60	2.039	1126.60	2.075
1040	4.026	1046a	4.027	1051v	4.026	1080k.60	2.041	1130.60	2.075
104006	4.026	1046ab	4.027	1051x	4.026	1080l.60	2.041	1132.60	2.075
1040b	4.026	1046b	4.027	1052t	4.027	1080m.60	2.041	1134.60	2.075
1040de	4.026	1046c	4.027	1053.20	2.027	1080m08.60	2.041	1136a.60	2.074
1040f	4.026	1046d	4.027	1053.60	2.027	1080p.60	2.040	1136c.60	2.074
1040g	4.026	1046d1	4.027	1054a.20	2.027	1080q.60	2.039	1139m.60	2.074
1040l	4.026	1046e	4.027	1054a.60	2.027	1080r.60	2.041	12	4.002
1040m	4.026	1046f	4.027	1054t.60	2.027	1080s.60	2.040	1243.60	2.057
1040n	4.026	1046g	4.027	1055k.60	2.027	1080t.60	2.040	1245.60	2.057
1040p	4.026	1046h	4.027	1055l.20	2.027	1080u.60	2.039	124760	2.057
1040q	4.026	1046k	4.027	1055l.60	2.027	1080v.60	2.040	1250b.60	2.057
1040r	4.026	1046l	4.027	1056.20	2.027	1080w.60	2.040	1251.60	2.057
1040s	4.026	1046m	4.027	1056.60	2.027	1080x.60	2.041	1256c.60	2.057
1040u	4.026	1046p	4.027	1056b.60	2.027	1080x.90	2.042	125760	2.057
1040v	4.026	1046q	4.027	1056f.60	2.027	1080y.60	2.040	13	4.002
1040w	4.026	1046r	4.027	1056n.20	2.027	1080z.20	2.039	1320.60	2.029
1040y	4.026	1046s	4.027	1057n.60	2.028	1081.70	2.041	1322.60	2.029
104105	4.027	1046t	4.027	1057p.20	2.028	1081a.60	2.039	1324.60	2.029
104108	4.027	1046u	4.027	1057s.20	2.028	1081b.60	2.039	1326.60	2.029
104110	4.027	1046v	4.027	1058.60	2.027	1081d.90	2.042	132760	2.029
1041e	4.027	1046w	4.027	1059.60	2.053	1081f.60	2.041	1329.20	2.029
1041g	4.027	1046x	4.027	1059.70	2.053	1081k.60	2.040	1334.20	2.023
1041l	4.027	1046y	4.027	1059d.60	2.053	1081l.60	2.039	1334d.20	2.023
1041r	4.027	1046z	4.027	1059g.40	2.053	1081m.60	2.039	1334h.20	2.023
1041s08	4.027	104705	4.027	1059l08.40	2.053	1081p.60	2.039	1335.20	2.043
1041w05	4.027	104708	4.027	1059l10.40	2.053	1081s.60	2.042	1335k.20	2.046
1042	4.026	1047a	4.027	1059l12.40	2.053	1081t.60	2.042	1335l.20	2.043
1042a	4.026	1047b	4.026	1059l14.40	2.053	1082.60	2.041	1338.60	2.043
1042b	4.026	1047c	4.026	1059l16.40	2.053	1083.60	2.076	1338a.60	2.044
1042c	4.026	1047l	4.027	106105	4.027	1084.60	2.042	1339.20	2.046
1042de	4.026	1047p	4.027	106108	4.027	1086.60	2.076	1340.60	2.046
1042f	4.026	1047q	4.027	1061f	4.027	1091.60	2.076	1341.60	2.043
1042g	4.026	1047r	4.027	106205	4.027	1092.60	2.076	1341d.20	2.043

Art.No.	Seite/Page	Art.No.	Seite/Page	Art.No.	Seite/Page	Art.No.	Seite/Page	Art.No.	Seite/Page
1341f.20	2.044	1405.60	2.048	200345.60	2.072	2127.60	2.074	3218a.60	3.027
1341g.20	2.043	1406.60	2.048	200390.60	2.072	2128.60	2.074	3219a.60	3.027
1341h.60	2.044	1407.60	2.048	2004.60	2.071	213	4.025	3223a.60	3.027
1341k.20	2.045	1408.60	2.048	2005.60	2.071	215	4.025	3226a.60	3.027
1341k.70	2.045	1409.50	2.048	2006.60	2.071	216.18	4.025	3228a.60	3.027
1341m.20	2.046	1411.60	2.030	200603.60	2.071	216.25	4.025	3236a.60	3.027
1341p.70	2.045	1420.60	2.030	20060845.60	2.072	216.30	4.025	3236c.60	3.027
1341r.20	2.044	1434.60	2.030	200645.60	2.072	216.37	4.025	3238a.60	3.027
1341v.20	2.043	1436.60	2.030	200690.60	2.072	217	4.025	3240a.60	3.027
1341w.60	2.045	1438.60	2.030	2007.60	2.071	218	4.025	33	4.003
1341z.70	2.043	1444.60	2.030	200745.60	2.072	219	4.025	33101a.60	3.048
1342.60	2.046	1453.60	2.030	200790.60	2.072	22	4.003	3310a.60	3.048
1342a.20	2.043	1454.60	2.030	2008.60	2.071	220.1	4.025	33161a.60	3.048
1342b.20	2.045	1455c	2.067	2009.60	2.071	220.2	4.025	3316a.60	3.048
1342c.60	2.046	1455e	2.067	201	4.025	220.3	4.025	33201a.67	3.048
1342d.60	2.046	1456a	2.068	2010.60	2.071	220.4	4.025	3320a.60	3.048
1343.70	2.045	1456b	2.068	2013.60	2.071	220.5	4.025	33301a.60	3.048
1344.20	2.059	1456c	2.068	2014.60	2.071	220.6	4.025	3330a.60	3.048
1344.60	2.059	1456d	2.068	2015.60	2.071	220.7	4.025	33341a.60	3.048
1344a.20	2.059	1456g	2.069	201503.60	2.071	221065	4.025	3334a.60	3.048
1345.20	2.059	1456h	2.069	201745.60	2.074	221101	4.025	33401a.60	3.048
1345g.20	2.059	1456k	2.069	2018.20	2.071	22120125	4.025	3340a.60	3.048
1345k.20	2.059	1456m	2.069	201990.20	2.072	22120140	4.025	3342a.67	3.048
1346.20	2.059	1467.60	2.030	2021.60	2.071	22120150	4.025	3344a.67	3.048
1346b.20	2.059	1468.60	2.030	2022.60	2.071	22126525	4.025	3392a	3.029
1346f.60	2.046	1469.60	2.030	2025.60	2.071	22126550	4.025	3394a	3.029
1347.60	2.043	15	4.002	2027.60	2.071	222065	4.025	3396a	3.029
1348.60	2.046	1530.20	2.024	203	4.025	222090	4.025	3397a	3.029
1349.60	2.059	1530b.50	2.070	2032.60	2.071	222101	4.025	3398a	3.029
1351.60	2.046	1530c.50	2.070	2035.60	2.071	2222009	4.025	3399	3.029
1353d.60	2.046	1530h.20	2.023	2036.60	2.071	222201	4.025	34	4.003
1353s.20	2.046	1530k.20	2.023	2038.60	2.071	222265	4.025	3400a	3.029
1359.60	2.060	1530l.20	2.023	204.10	4.025	223101	4.025	3401a	3.029
1360.20	2.060	1530m.20	2.070	204.5	4.025	223165	4.025	3402a	3.029
1361.60	2.060	1530p.20	2.070	204.6	4.025	223201	4.025	3402b	3.029
1363.20	2.046	1530r.20	2.070	204.8	4.025	223265	4.025	3403a	3.029
1363t.20	2.046	1551.20	2.048	2047.60	2.071	224.6	4.025	3403b	3.029
1364a.60	2.060	1555.60	2.048	2048.60	2.072	224.8	4.025	3405a	3.029
1364b.60	2.060	1556.60	2.048	205	4.025	23	4.003	3405b	3.029
1364c.60	2.060	1557.60	2.048	2051.60	2.071	24	4.003	3406a	3.029
1364d.60	2.060	1558.60	2.048	2053.60	2.071	25	4.003	3406b	3.029
1364e.60	2.060	1559.20	2.049	2054.60	2.071	2500.60	2.073	3408a	3.029
1364f.60	2.060	1562a.60	2.049	2055.60	2.071	2501.60	2.073	3409a	3.029
1364g.60	2.060	1562b.60	2.049	2056.60	2.072	2504.60	2.073	3410a	3.029
1364h.60	2.060	1562c.60	2.049	2057.60	2.072	250445.60	2.073	3410w	3.032
1364k.60	2.060	1562d.80	2.049	2058.60	2.071	2505.60	2.073	3411a	3.029
1364l.60	2.060	1562f.90	2.049	2059.60	2.071	2519.60	2.073	3412a	3.029
1364m.60	2.060	1562k.60	2.049	206	4.025	2521.60	2.073	3414a	3.029
1364p.60	2.060	1562l.60	2.049	206.1	4.025	252145.60	2.073	3414w	3.032
1364q.60	2.060	1562m.90	2.049	2060.60	2.071	252190.60	2.073	3415a	3.029
1364r.60	2.060	1562p.90	2.049	2061.60	2.071	2560.60	2.073	3415s	3.033
1364s.60	2.060	1563.40	2.049	2062.60	2.071	2572.60	2.073	3415w	3.032
1364t.60	2.060	1564.40	2.049	2064.60	2.071	2574.60	2.073	3416a	3.029
1364u.60	2.060	1565.40	2.049	2065.60	2.071	26	4.003	3416w	3.032
1365.60	2.060	1567.60	2.047	2067.60	2.071	27	4.003	3417a	3.029
1365a.60	2.060	1590.60	2.049	2068.60	2.071	28	4.003	3417w	3.032
1365b.60	2.060	1591.60	2.049	2069.60	2.071	29	4.003	3418a	3.029
1365c.60	2.060	1592.60	2.049	207	4.025	3	4.002	3418w	3.032
1365d.60	2.060	1593.60	2.049	2075.60	2.071	30	4.003	3419a	3.029
1365e.60	2.060	1595.90	2.049	2077.90	2.071	3001a.60	3.028	3419w	3.032
1365f.60	2.060	16	4.002	208	4.025	3003a.60	3.028	3420a	3.029
1365l.60	2.060	1602.60	2.049	2080.60	2.074	3003c.60	3.028	3420s	3.033
1365m.60	2.060	1604.70	2.047	2083.60	2.071	3004a.60	3.028	3420w	3.032
1366.68	2.061	1609.90	2.047	2084.60	2.074	3005a.60	3.028	3421a	3.029
1366b.68	2.061	1610.90	2.049	2088.60	2.071	3007a.60	3.028	3421w	3.032
1366e.68	2.061	1611.60	2.049	21	4.003	3007e.60	3.028	3422a	3.029
1366m.68	2.061	1614.70	2.047	210	4.025	3021a.60	3.028	3422w	3.032
1368.60	2.061	1615.70	2.048	2100.60	2.074	3021c.60	3.028	3423a	3.029
1369.60	2.061	17	4.002	2101.60	2.074	3023a.60	3.028	3423w	3.032
1389.20	2.048	18	4.002	2102.60	2.074	3025a.60	3.028	3424a	3.029
1397.80	2.048	19	4.002	2103.60	2.074	3030a.40	3.028	3424w	3.032
1398.20	2.048	2	4.002	2103a.60	2.074	31	4.003	3425a	3.029
1399.20	2.048	20	4.002	2104.60	2.074	32	4.003	3425s	3.033
14	4.002	2000.60	2.071	211.20	4.025	3212a.60	3.027	3425w	3.032
1401.40	2.048	2001.60	2.071	211.28	4.025	3213a.60	3.027	3426a	3.029
1402.60	2.048	2002.60	2.071	211.32	4.025	3215a.60	3.027	3426w	3.032
1403.60	2.048	200205.90	2.071	212	4.025	3215b.60	3.027	3427a	3.029
1404.90	2.048	2003.60	2.071	2120.60	2.074	3216a.60	3.027	3427w	3.032



Verbindungstechnik

# Artikelnummerverzeichnis

## Registre numéro d'article

## Article number index

Art.No.	Seite/Page	Art.No.	Seite/Page	Art.No.	Seite/Page	Art.No.	Seite/Page	Art.No.	Seite/Page
3428a	3.029	3481w	3.032	3523c	3.036	3604a	3.039	3636a	3.039
3428w	3.032	3482a	3.030	3525a	3.034	3604c	3.043	3637a	3.039
3429a	3.029	3482w	3.033	3525a.42	3.034	36052a	3.049	3637ah	3.041
3429w	3.032	3483a	3.030	3527a	3.034	36052c	3.050	3637c	3.043
3430a	3.029	3483w	3.033	3528a	3.034	3605a	3.038	3637ch	3.044
3431a	3.029	3484a	3.030	3529a	3.034	3605c	3.042	3639a	3.039
3431s	3.033	3484w	3.033	3530a	3.034	3606a	3.038	3639ah	3.041
3431w	3.032	3485s	3.033	3530c	3.036	3606c	3.042	3639c	3.043
3432a	3.029	3486a	3.030	3532a	3.034	3607a	3.038	36402a	3.049
3432w	3.032	3486s	3.033	3532a3	3.037	3608a	3.039	3640a	3.038
3433a	3.029	3486w	3.033	3532a4	3.037	3608ah	3.041	3640c	3.042
3433w	3.032	3487a	3.031	3532c	3.036	3608c	3.043	36412a	3.049
3434a	3.029	3487w	3.033	3534a	3.034	3608ch	3.044	3641a	3.038
3434w	3.032	3488a	3.031	3534c	3.036	36092a	3.049	3642a	3.038
3436a	3.029	3488s	3.033	3538a	3.034	36092c	3.050	3643a	3.038
3436s	3.033	3488w	3.033	3538c	3.036	3609a	3.038	3644a	3.038
3437a	3.030	34891a	3.031	3540a	3.034	3609c	3.042	3645a	3.039
3437s	3.033	34891s	3.033	3542a	3.034	3610a	3.038	3645ah	3.041
3437w	3.032	34891w	3.033	3544a	3.034	3610a3	3.045	3647a	3.039
3438a	3.030	34892a	3.031	3547a	3.034	3610a4	3.045	3647ah	3.041
3438w	3.032	34893a	3.031	3547c	3.036	36112a	3.049	3649a	3.039
3439a	3.030	34893w	3.033	3549a	3.035	3611a	3.038	3650a	3.039
3439w	3.032	34894a	3.031	3549c	3.036	3611c	3.042	3652a	3.039
3440a	3.030	34894w	3.033	3551a	3.035	3612a	3.039	3652ah	3.041
3441a	3.030	34896a	3.031	3553a	3.035	3612c	3.043	3652c	3.043
3441w	3.032	34897a	3.031	3555a	3.035	3613a	3.038	3652ch	3.044
3444a	3.030	34898a	3.031	3559a	3.035	3614a	3.039	36532a	3.049
3444s	3.033	34899a	3.031	3560a	3.035	3614ah	3.041	36532c	3.050
3445a	3.030	3489a	3.031	3562a	3.035	3614c	3.043	3653a	3.038
3445s	3.033	3489w	3.033	3562c	3.036	3614ch	3.044	3653c	3.042
3445w	3.032	3490a	3.034	3564a	3.035	3615a	3.039	36552a	3.049
3446a	3.030	3491a	3.034	3564c	3.036	3616a	3.039	3655a	3.038
3446w	3.032	3492a	3.034	3566a	3.035	3616ah	3.041	3655a3	3.045
3447a	3.030	3492c	3.036	3568a	3.035	3616c	3.043	3655a4	3.045
3447w	3.032	3493a	3.034	3571a	3.035	3616ch	3.044	3655c	3.042
3448a	3.030	3494a	3.034	3573a	3.035	3617a	3.038	3656a	3.039
3449a	3.030	3496a	3.034	3575a	3.035	3617c	3.042	3656ah	3.041
3457a	3.030	35	4.003	3577a	3.035	3618a	3.039	3656c	3.043
3457s	3.033	3500a	3.034	3579a	3.035	3619a	3.039	3656ch	3.044
3457w	3.032	3501a	3.034	3580a	3.035	3619ah	3.041	3660a	3.039
3458a	3.030	3502a	3.034	3582a	3.035	3619c	3.043	3660ah	3.041
3458w	3.032	3502c	3.036	3584a	3.035	3621a	3.039	3660c	3.043
3459a	3.030	3503a	3.034	3586a	3.035	3621ah	3.041	3660ch	3.044
3459w	3.032	3503c	3.036	35881a	3.035	3621c	3.043	36612a	3.049
3460a	3.030	3504a	3.034	3588a	3.035	3622a	3.038	3661a	3.038
3460w	3.032	3504c	3.036	3589a	3.035	3622c	3.042	3661c	3.042
3461a	3.030	3505a	3.034	3590a	3.035	36232a	3.049	3664a	3.039
3461w	3.032	3506a	3.034	3592a	3.035	36232c	3.050	3664ah	3.041
3463a	3.030	3507a	3.034	3593a	3.035	3623a	3.038	3664c	3.043
3463s	3.033	3507c	3.036	359400a	3.035	3623c	3.042	36652a	3.049
3463w	3.032	3508a	3.034	359401a	3.035	3624a	3.038	3665a	3.038
3464a	3.030	3508c	3.036	359402a	3.035	3625a	3.039	3665c	3.042
3464s	3.033	3509a	3.034	359403a	3.035	3625c	3.043	3666a	3.039
3464w	3.032	3509a3	3.037	359404a	3.035	3626a	3.038	3666ah	3.041
3465a	3.030	3509a4	3.037	359404b	3.035	3626c	3.042	3667a	3.038
3465w	3.032	3510a	3.034	359405a	3.035	3627a	3.039	3668a	3.039
3466a	3.030	3510c	3.036	359406a	3.035	3627ah	3.041	3668ah	3.041
3466w	3.032	3512a	3.034	359407a	3.035	36282c	3.050	3669a	3.038
3467a	3.030	3513a	3.034	359408a	3.035	3628a	3.038	3670a	3.039
3467w	3.032	3513c	3.036	359409a	3.035	3628c	3.042	3671a	3.039
3468a	3.030	3514a	3.034	359410a	3.035	3629a	3.039	3672a	3.039
3468w	3.032	3514c	3.036	359411a	3.035	3629c	3.043	3673a	3.039
3469a	3.030	3515a	3.034	359412a	3.035	3629ch	3.044	3674a	3.039
3469s	3.033	3515c	3.036	359413a	3.035	36302a	3.049	3676a	3.039
3470a	3.030	3516a	3.034	359414a	3.035	3630a	3.038	3677a	3.040
3470s	3.033	3517a	3.034	359415a	3.035	3630c	3.042	3678a	3.040
3470w	3.032	3517c	3.036	359416a	3.035	3631a	3.038	3679a	3.040
3471a	3.030	3518a	3.034	3594a	3.035	3631a3	3.045	3680a	3.040
3471w	3.032	3518c	3.036	3595a	3.039	3631a4	3.045	3682a	3.040
3472a	3.030	3519a	3.034	35961a	3.039	36322a	3.049	3683a	3.040
3472w	3.032	3519c	3.036	3596a	3.039	3632a	3.038	3684a	3.040
3473a	3.030	3520a	3.034	3596c	3.043	3632c	3.042	3685a	3.040
3473w	3.032	3520a3	3.037	3597a	3.039	3633a	3.039	3686a	3.040
3474a	3.030	3520a4	3.037	3598a	3.039	3633c	3.043	3687a	3.040
3480a	3.030	3521a	3.034	36	4.003	3635a	3.039	3690a	3.040
3480s	3.033	3521c	3.036	3600a	3.039	3635ah	3.041	3691a	3.040
3480w	3.032	3522a	3.034	3602a	3.039	3635c	3.043	3692a	3.040
3481a	3.030	3523a	3.034	3603a	3.038	3635ch	3.044	3693a	3.040

Art.No.	Seite/Page	Art.No.	Seite/Page	Art.No.	Seite/Page	Art.No.	Seite/Page	Art.No.	Seite/Page
3694a	3.040	3747b	3.047	3773b05.60	2.082	3784g.60	3.003	379605.60	3.004
3699	3.051	3747i	3.047	3773b08.60	2.082	3784s.60	3.003	379704.60	3.005
37	4.003	3748	3.047	3773c05.20	2.082	378508.60	2.085	379705.60	3.005
3700	3.051	37482	3.050	3773c05.60	2.082	3785a05.20	2.084	3798b.60	3.005
3700k	3.051	3749	3.047	3773e05.20	2.083	3785a05.60	2.084	3798r.60	3.005
3701	3.051	37492	3.050	3773k05.60	2.081	3785a08.60	2.085	37990.60	3.091
3701k	3.051	37510.60	3.057	3774.60	3.002	3785c08.60	2.084	379905.60	3.068
3702	3.051	37513.60	3.057	3774g.60	3.002	3785d.20	2.086	379908.60	3.068
3703	3.051	37514.60	3.057	3775a05.20	2.080	3785d.60	2.086	38	4.003
3704	3.051	37515.60	3.057	3775a05.60	2.080	3785e.60	2.087	3800.60	3.069
3705	3.051	37517.60	3.057	3775a08.20	2.081	3785e05.60	2.086	38000.60	3.093
3706	3.051	37530.70	3.057	3775a08.60	2.081	3785f04.60	2.089	3801.60	3.069
3707	3.051	37568.60	3.057	3775b05.60	2.082	3785f05.20	2.089	38010.60	3.093
3708	3.051	375701.60	3.057	3775b08.60	2.083	3785f05.60	2.089	380205.60	3.069
3709	3.051	375702.60	3.057	3775d05.60	2.081	3785f08.60	2.089	380208.60	3.069
3710	3.051	37572.60	3.057	3775e05.60	2.078	3785g.60	2.085	3803.60	3.069
3711	3.051	37573.60	3.057	3775f.60	2.079	3785h.60	2.083	38030.60	3.093
3712	3.051	37574.60	3.057	3775g.60	2.079	3785j08.60	2.085	3805.60	3.069
3713	3.051	37575.60	3.057	3775k.60	2.078	3785k05.60	2.085	38050.27	3.093
3714	3.053	37577.60	3.057	3775l08.20	2.081	3785k08.60	2.085	38061.20	3.093
3715	3.053	37578.60	3.057	3775w05.60	2.078	3785l08.60	2.085	38061.90	3.093
3715p	3.053	37580.60	3.068	3776.60	3.002	3785m05.60	2.085	3807.60	3.069
3716	3.053	37591.60	3.057	3776b.60	2.083	3785p.60	2.088	38071.20	3.093
3716p	3.053	37592.60	3.057	3777.60	3.002	3785q05.60	2.083	3808.60	3.069
3717	3.053	37600.60	3.091	377705.60	3.002	3785q08.60	2.084	3810.60	3.006
3717p	3.053	37601.67	3.091	3777k.60	3.002	3785r.60	2.085	3810d.60	3.008
3719	3.052	3760a.60	3.067	3777s.60	3.002	3785s.60	2.083	3810d05.60	3.008
3720	3.052	3760b.60	3.067	3778.60	3.002	3785t05.60	2.084	3810h.60	3.006
372021	3.055	3761.60	3.067	3778.90	3.002	3785t08.60	2.084	3811.60	3.006
3721	3.052	3761a.60	3.067	3778t05.60	3.002	3785u08.60	2.084	3811.90	3.006
372122	3.055	37620.20	3.091	3778t08.60	3.002	3785v08.60	2.084	3811d.60	3.006
3722	3.052	37620.60	3.091	3778t4505.60	3.002	3785w06.60	2.085	381208.60	3.006
3723	3.052	37620c.60	3.091	3778t4508.60	3.002	3785w08.60	2.085	381208.90	3.006
3724	3.052	37621.67	3.091	3778t9005.60	3.002	3785x08.60	2.085	3813.60	3.006
3725	3.052	3762a.60	3.067	3778t9008.60	3.002	3785y05.60	2.083	381405.60	3.006
3726	3.052	3762b.20	3.067	3778u05.60	3.002	3785y08.60	2.084	381408.60	3.006
3727	3.052	3762b.60	3.067	3778u08.60	3.002	3786.60	3.003	3814d.60	3.006
3728	3.052	3762c.60	3.067	3778u4505.60	3.002	3786a.60	3.003	3815.60	3.006
3729	3.052	3762e.60	3.068	3778u4508.60	3.002	3786b.20	3.003	381505.60	3.006
3730	3.052	3762f.60	3.068	3778u9005.60	3.002	3786j.60	3.003	3816.60	3.006
3731	3.052	3762g.60	3.068	3778u9008.60	3.002	3786m.60	3.003	3816d05.60	3.008
3732	3.052	37637.20	3.091	3779.60	2.081	3786q.60	3.003	3816d08.60	3.008
3733	3.052	37637.60	3.091	3779a.20	2.011	3786u.60	3.003	3816d4505.60	3.008
3734	3.054	3763704.60	3.091	3779b.20	2.010	3786v.60	3.003	3816d4508.60	3.008
3734h	3.055	37638.60	3.091	3779c.20	2.010	378705.60	2.087	3816d9005.60	3.008
3735	3.054	3763a.60	3.067	3779f.20	2.009	378708.20	2.087	3816d9008.60	3.008
3735h	3.055	3764.60	3.067	3779h.20	2.011	378708.60	2.087	3816t4505.60	3.008
3735p	3.054	37640.67	3.091	3779k.20	2.010	3787b08.60	2.086	3816t9008.60	3.008
3735w	3.054	3764w.60	3.067	3779l.60	2.015	378905.60	2.086	3817.60	3.006
3736	3.054	3765.60	3.067	3779r.20	2.010	378908.20	2.087	381790	3.006
3736h	3.055	37650.67	3.091	3779s.60	2.079	378908.60	2.087	381745.60	3.007
3736p	3.054	3765w.60	3.067	3779t.60	2.078	3789a08.60	2.086	381790.60	3.007
3737	3.054	3766.60	3.067	3779u.20	2.083	3789b05.60	2.086	3817e90.60	3.008
3737h	3.055	37660.60	3.091	3779wr.20	2.083	3789c05.60	2.087	3818.60	3.006
3737p	3.054	3766w.20	3.068	378005.20	2.078	3789c08.60	2.087	3818d.60	3.006
3739	3.046	3766w.60	3.068	378005.60	2.078	3789d08.60	2.087	3819.60	3.006
3740	3.046	3767.20	3.067	378008.20	2.078	3789f08.60	2.087	381905.60	3.006
3740l	3.046	3767.60	3.067	378008.60	2.078	3789l08.60	2.088	3820.60	3.006
3741	3.046	37670.27	3.091	378010.60	2.081	3790.60	3.004	3821.60	3.006
3741k	3.046	37670.67	3.091	3780a05.60	2.081	3790.70	3.004	3821l4508.60	3.007
3741l	3.046	3767w.20	3.068	3780a08.20	2.081	3790b.60	3.004	3821r.60	3.006
3742	3.046	3769.60	3.067	3780a08.60	2.081	3790c.60	3.004	3821r4505.60	3.007
3743	3.046	3770.60	3.002	3780b08.60	2.079	3790d.90	3.004	3821r4508.60	3.007
3744	3.046	37701.60	3.002	3780e08.60	2.079	3790h.60	3.004	3821r90.60	3.007
37441	3.046	3770105.60	3.002	3780l.60	2.079	3790p.60	3.004	3822.60	3.006
37442	3.046	3770b05.20	3.003	3780s08.20	2.080	3791a.60	3.004	3823.60	3.006
37443	3.046	3770b08.60	3.003	378105.60	3.068	3791c.60	3.004	382305.60	3.006
37444	3.046	3770d.60	3.003	378108.67	3.068	3791d.60	3.004	3824.60	3.006
3745	3.047	3770h05.67	3.003	3782a.60	2.086	3791g.60	3.004	3824e.60	3.008
3745b	3.047	3770h08.67	3.003	3782b.60	2.086	3791k.60	3.004	3824f.60	3.008
3745k	3.047	3770r.60	2.022	3783.60	2.087	3791m.60	3.004	382505.20	2.090
3745l	3.047	377105.60	2.079	3783b.60	2.088	3792.60	3.004	382505.60	2.090
3746	3.047	377108.60	2.082	3783c.60	2.024	3793.60	3.004	382508.20	2.091
3746k	3.047	3771b.60	2.088	3783d.60	2.088	379405.60	3.004	382508.60	2.091
3746l	3.047	3772.60	3.002	3783e.60	2.086	379408.60	3.004	3825a05.20	2.090
3746w	3.047	3773a05.20	2.080	3783f.60	2.087	3795a.60	3.004	3825c08.20	2.091
3747	3.047	3773a05.60	2.080	37843.60	3.003	3795c.60	2.085	3825c08.60	2.091
37472	3.050	3773a08.60	2.080	3784b.60	3.003	379604.60	3.004	3825k.60	2.090



Verbindungstechnik

# Artikelnummerverzeichnis

## Registre numéro d'article

### Article number index

Art.No.	Seite/Page	Art.No.	Seite/Page	Art.No.	Seite/Page	Art.No.	Seite/Page	Art.No.	Seite/Page
3825i05.60	2.090	3833.95	3.071	3845.60	3.012	3863a5307.60	3.021	3863e12.60	3.024
3825i08.60	2.091	38330.60	3.095	3845a9008.60	3.012	3863a5308.60	3.021	3863e14.60	3.024
3825m.60	2.090	38330.67	3.095	3845b9008.60	3.016	3863asb02.90	3.022	3863e16.60	3.024
3825s08.60	2.091	3833w.60	3.072	3846.60	3.010	3863asb03.90	3.022	3864a.60	3.010
3825v08.70	2.090	3835.60	3.071	38462.60	3.016	3863asb04.90	3.022	3864b.20	3.011
3825z.60	2.090	3835.95	3.071	38463.60	3.016	3863asb05.90	3.022	3864b.60	3.011
382605.60	2.090	3835a.67	3.071	3846a.60	3.012	3863asb06.90	3.022	3864c.60	3.012
382608.60	2.091	3835s.27	3.076	3846c.60	3.010	3863asb07.90	3.022	3864d.60	3.016
3826a.20	2.090	3835t.60	3.076	3846e.60	3.016	3863asb08.90	3.022	3865a.60	3.016
3826a.60	2.090	3835u.60	3.076	3846k.60	3.016	3863b3202.60	3.021	3865b.60	3.016
3826d.60	2.094	3835x.40	2.107	3846m.60	3.016	3863b3203.60	3.021	3865c.60	3.016
3826f05.60	2.095	3835y.60	2.107	3846p.80	3.015	3863b3204.60	3.021	3865f.70	2.096
3826f08.60	2.095	3836a.60	3.072	3846t.70	3.015	3863b3205.60	3.021	3865g.60	3.016
3826g08.60	2.091	3836b.60	3.072	3846v.60	3.012	3863b3206.60	3.021	3865h.60	3.016
3826g08.60	2.095	3836c.60	3.072	3846w.60	3.016	3863b3207.60	3.021	3865k.60	2.098
3826t.60	2.094	3836d.60	3.072	3847.60	3.011	3863b3208.60	3.021	3865l.60	2.100
382705.60	2.092	38371a.60	3.072	3847e.60	3.011	3863b4302.60	3.021	3865m.60	2.100
382708.60	2.094	38372.60	3.095	3848.60	3.012	3863b4303.60	3.021	3865p.60	2.100
3827a05.60	2.092	38372c.60	3.072	38481.60	3.012	3863b4304.60	3.021	3865q.60	2.100
3827b08.20	2.092	38373c.60	3.072	3848l9008.60	3.017	3863b4305.60	3.021	3865r.60	2.097
3827b08.60	2.092	38374.60	3.095	3848s.60	3.017	3863b4306.60	3.021	3865s.70	2.097
3827b08.80	2.092	3838.27	3.074	3848t08.60	3.017	3863b4307.60	3.021	3865t.70	2.096
3827c.20	2.093	3838.60	3.074	3848t4508.60	3.017	3863b4308.60	3.021	3865u.60	2.097
3827d.60	2.093	3838a.27	3.074	3848l9008.60	3.017	3863b5302.60	3.021	3865v02.60	2.104
3827e.20	2.093	3838a.60	3.074	3849.60	3.010	3863b5303.60	3.021	3865v04.60	2.104
3827f08.60	2.092	3838b.27	3.074	3851.60	3.011	3863b5304.60	3.021	3865v06.60	2.104
3827g08.20	2.092	3838b.60	3.074	3851.90	3.011	3863b5305.60	3.021	3865v08.60	2.104
3827h.20	2.091	3838d.60	3.074	3853.60	3.012	3863b5306.60	3.021	3865v10.60	2.104
3827h.60	2.091	3838d.90	3.074	3853.90	3.012	3863b5307.60	3.021	3865v12.60	2.104
3827k05.60	2.093	3838e.60	3.075	38531.20	3.012	3863b5308.60	3.021	3865v14.60	2.104
3827k08.60	2.093	3838e.90	3.075	3854.60	3.010	3863bsb02.90	3.023	3865v16.60	2.104
3827m.60	2.092	3838g.60	3.075	38541.60	3.016	3863bsb03.90	3.023	3865x.60	2.103
3827p05.60	2.093	3839.80	3.075	38543.60	3.016	3863bsb04.90	3.023	3865y.60	2.098
3827p05.90	2.093	3839b90.60	3.073	3854r.60	3.016	3863bsb05.90	3.023	3865z.60	2.096
3827p08.20	2.093	3839c.60	3.073	3854t.60	3.016	3863bsb06.90	3.023	3866002	2.108
3827p08.60	2.093	3839c.90	3.073	3855.60	3.011	3863bsb07.90	3.023	3866003	2.108
3827r05.60	2.091	3839d.60	3.070	3856.20	3.011	3863bsb08.90	3.023	3866004	2.108
3828.60	3.008	3839f.67	3.075	3856.60	3.011	3863c3202.60	3.022	3866005	2.108
3828a.60	3.008	3839k.60	3.075	3856.80	3.011	3863c3203.60	3.022	3866006	2.108
3828b.60	3.008	3839m.60	3.073	3856.90	3.011	3863c3204.60	3.022	3866008	2.108
3828d.60	3.009	3839m45.60	3.073	3856e.90	3.011	3863c3205.60	3.022	3866009	2.108
3828e.80	3.009	3839n.60	3.073	3856p.60	3.016	3863c3206.60	3.022	3866010	2.108
3828f.60	3.009	3839n45.60	3.073	3858.60	3.012	3863c3207.60	3.022	3866012	2.108
3828g.60	3.006	3839p.60	3.073	38581.20	3.012	3863c3208.60	3.022	3866032	2.108
3828k.60	3.009	3839r.60	3.073	3859.60	3.010	3863c4302.60	3.022	3866502	2.109
3828k.90	3.009	3839s.60	3.073	3860.60	3.011	3863c4303.60	3.022	3866503	2.109
3828p05.60	3.009	3839s45.60	3.073	3861.60	3.011	3863c4304.60	3.022	3866504	2.109
3828q.60	3.009	3839t.60	3.073	386162.60	3.025	3863c4305.60	3.022	3866505	2.109
3828r.60	3.009	3839t45.60	3.073	386163.60	3.025	3863c4306.60	3.022	3866506	2.109
3828s.60	3.009	3839u.20	3.073	386164.60	3.025	3863c4307.60	3.022	3866507	2.109
3828v.60	3.009	3839u.60	3.073	386165.60	3.025	3863c4308.60	3.022	3866508	2.109
3828z.60	3.009	3839u45.60	3.073	386166.60	3.025	3863c5302.60	3.022	3866509	2.109
3829.60	3.070	3839w.60	3.073	386282.60	3.025	3863c5303.60	3.022	3866510	2.109
38290a.67	3.093	3840.20	3.010	386283.60	3.025	3863c5304.60	3.022	3866511	2.109
38290b.67	3.093	3840.80	3.010	386284.60	3.025	3863c5305.60	3.022	3866512	2.109
3829a.60	3.070	3840.90	3.010	386285.60	3.025	3863c5306.60	3.022	3866513	2.109
3829b.67	3.070	38401sb.90	3.014	386286.60	3.025	3863c5307.60	3.022	3866516	2.109
3829c.60	3.070	38401sbk.80	3.014	3863.60	3.012	3863c5308.60	3.022	3866a.20	2.098
3829d.60	3.070	38402sb.90	3.014	3863.80	3.012	3863csb02.90	3.023	3866a.60	2.098
3829e.60	3.070	38402sbs.80	3.014	3863a3202.60	3.021	3863csb03.90	3.023	3866a.90	2.099
3829f.60	3.070	3840a2sba.90	3.014	3863a3203.60	3.021	3863csb04.90	3.023	3866ab.60	2.096
3829g.60	3.070	3840d2sb.90	3.014	3863a3204.60	3.021	3863csb05.90	3.023	3866ac.60	2.097
3829h.60	3.070	3841.80	3.011	3863a3205.60	3.021	3863csb06.90	3.023	3866b.20	2.099
3829j.60	3.009	3841.90	3.011	3863a3206.60	3.021	3863csb07.90	3.023	3866b.60	2.099
3829k05.60	3.070	38411sbi.80	3.014	3863a3207.60	3.021	3863csb08.90	3.023	3866b90.60	2.103
3829k08.60	3.070	38411sbi.90	3.014	3863a3208.60	3.021	3863d02.60	3.024	3866c.20	2.097
3829m.60	3.009	38411sbk.80	3.014	3863a4302.60	3.021	3863d04.60	3.024	3866c.60	2.097
3831.60	3.071	38412sba.90	3.014	3863a4303.60	3.021	3863d06.60	3.024	3866d.60	3.016
3831.90	3.071	38412sbs.80	3.014	3863a4304.60	3.021	3863d08.60	3.024	3866e.60	2.103
38310.60	3.095	3842.80	3.012	3863a4305.60	3.021	3863d10.60	3.024	3866f.60	2.099
38310.67	3.095	38421sbae.60	3.014	3863a4306.60	3.021	3863d12.60	3.024	3866f.90	2.099
38311.60	3.095	38421sbae.80	3.014	3863a4307.60	3.021	3863d14.60	3.024	3866g.60	2.096
3832.60	3.071	38421sbae.90	3.014	3863a4308.60	3.021	3863d16.60	3.024	3866k.60	3.017
3832.95	3.071	38422sba.60	3.014	3863a5302.60	3.021	3863e02.60	3.024	3866l.60	2.099
3832d.60	3.071	38422sba.80	3.014	3863a5303.60	3.021	3863e04.60	3.024	3866m.60	2.100
3832w.60	3.072	38422sba.90	3.014	3863a5304.60	3.021	3863e06.60	3.024	3866p.60	2.096
3833.27	3.071	38422sbi.90	3.014	3863a5305.60	3.021	3863e08.60	3.024	3866q.60	2.097
3833.60	3.071	3843.60	3.011	3863a5306.60	3.021	3863e10.60	3.024	3866r.60	2.096

Art.No.	Seite/Page	Art.No.	Seite/Page	Art.No.	Seite/Page	Art.No.	Seite/Page	Art.No.	Seite/Page
3866s.20	2.100	38695.60	3.018	387203	3.026	3903h	3.085	3936pa	3.077
3866t.60	2.097	3869a.60	3.018	387204	3.026	3903s	3.085	3937s	3.086
3866u.60	2.096	3869a90.60	3.018	387224	3.026	3904	3.082	3938pa	3.078
3866v.60	2.099	3869ab.60	3.018	38731.20	3.013	3904s	3.083	3938pe	3.078
3866x.60	2.099	3869ac.60	3.018	38732.40	3.013	3905	3.082	39390s	3.096
3866y.60	2.099	3869ad15.80	3.018	38733.60	3.013	39052	3.094	3939s	3.086
3866z.60	2.096	3869b.60	3.018	3873a.60	3.013	3905s	3.083	3940pe	3.079
3867002	2.110	3869c.60	3.018	3873b.60	3.012	3906	3.084	3940pv	3.078
3867003	2.110	3869d.60	3.018	3873b.80	3.012	39062	3.096	39411pa	3.078
3867004	2.110	3869e.67	3.018	3873c.60	3.013	3906h	3.085	39412pa	3.078
3867005	2.110	3869f.60	3.018	3873c.90	3.013	3906s	3.085	3941pa	3.078
3867006	2.110	3869g.60	3.018	3873d.60	3.012	3907	3.084	3941pa3	3.078
3867008	2.110	3869h.90	3.018	3873k.60	3.020	39072	3.096	3941pe0	3.078
3867010	2.110	3869k.60	3.018	3873m.60	3.020	3907h	3.085	3941pe2	3.078
3867012	2.110	3869l90.60	3.019	38750a.60	3.013	3907s	3.085	3943pv	3.078
3867032	2.110	3869m.60	3.019	38750b.60	3.012	3908	3.090	3944	3.084
386712	2.111	3869m50.20	3.019	3875a.60	3.013	3909	3.090	3944s	3.086
386714	2.111	3869m90.60	3.019	3875a.90	3.013	3910	3.087	3945	3.084
386716	2.111	3869n.60	3.010	3875f.40	3.075	39102	3.096	3945s	3.086
386718	2.111	3869n45.60	3.011	3875h.60	3.020	3910h	3.087	3946pe	3.079
38672	2.111	3869p.60	3.019	3875k.60	2.022	3910s	3.088	3947	3.084
386723	2.111	3869p90.60	3.019	3875l.60	3.020	3911	3.087	3947s	3.086
38673	2.111	3869q45.60	3.011	3875m.60	3.020	3911h	3.087	3948pv	3.078
3867a.60	2.103	3869r.60	3.019	3875p.60	3.020	3911s	3.088	3948r	4.004
3867ab.60	2.101	3869r.90	3.019	38760c.60	3.013	3912	3.087	3948s	4.004
3867ac.40	2.103	3869s.60	3.019	3876c.60	3.013	3912h	3.087	3948un	4.005
3867b.20	2.102	3869t.60	3.019	3876e.60	3.024	3912s	3.088	3950g	4.006
3867b.60	2.102	3869u.60	3.019	3876q02.60	3.013	391305	3.080	3950k	4.006
3867c.60	2.101	3869v.60	3.019	3876r02.60	3.024	391305s	3.081	3950wn	4.006
3867d.20	2.101	3869w.90	3.019	3876r04.60	3.024	391308	3.080	3951an	4.007
3867d.60	2.101	3869x.60	3.019	3876r06.60	3.024	391308s	3.081	3954n	4.009
3867d1.60	2.101	3869x.90	3.019	3876r08.60	3.024	3914	3.090	3955	4.009
3867e.60	2.102	3869x90.60	3.019	3876r10.60	3.024	3914s	3.090	3956	4.009
3867f.60	2.105	3869x90.90	3.019	3876r12.60	3.024	3915	3.097	3957n	4.009
3867fb.60	2.106	3869y.60	3.019	3876r14.60	3.024	3915s	3.098	3958n	4.008
3867fc.20	2.105	3869z.60	3.020	3876r16.60	3.024	3916	3.097	3959	3.087
3867fd.60	2.095	3870a.80	3.013	3876r18.60	3.024	3916s	3.098	3959s	3.088
3867fg.60	2.106	3870b.60	3.012	3876r20.60	3.024	3917	3.097	3959sh	3.089
3867fh.60	2.106	3870b.80	3.012	3876s02.60	3.013	3917s	3.098	396005	3.080
3867fk.60	2.105	3870c.80	3.013	3876t02.60	3.013	3919	3.090	396008	3.080
3867g.60	2.103	3870c.90	3.013	3878a.60	3.013	3919s	3.090	396008s	3.081
3867h.60	2.105	3870d.80	3.012	3879a.60	3.013	3920	3.097	3960205	3.092
3867k.60	2.102	3870e.60	3.010	3879c.60	3.013	3920s	3.098	3960208	3.092
3867l.60	2.101	3870e45.60	3.011	3879d.40	3.013	3921	3.097	396105	3.082
3867m.60	2.100	3870f.60	3.010	3879d.90	3.013	3921s	3.098	396105s	3.083
3867p.60	2.103	3870f45.60	3.011	3879f.60	3.019	3922	3.097	396108	3.082
3867p90.68	2.103	3870g20.80	3.011	3882.60	3.099	3922s	3.098	396108s	3.083
3867q.60	2.105	3870g45.60	3.011	38841.60	3.099	3923008s	3.094	39612	3.094
3867r.60	2.103	3870h.60	3.010	3885.20	3.099	392305s	3.083	396205	3.082
3867s.60	2.105	3870h45.60	3.011	3887.60	3.099	392308s	3.083	396205s	3.083
3867t.60	2.105	3870m.60	3.010	38870.60	3.099	3924	3.100	396208	3.082
3867u.60	2.105	3870m90.60	3.012	38875.60	3.099	3925	3.088	396208s	3.083
3867v.60	2.103	3870n.60	3.020	3888.20	3.099	3925s	3.089	39622	3.094
3867x.60	2.103	3870n45.60	3.020	3889.20	3.099	3926	3.088	3963	3.084
3867y.20	2.106	3870n90.60	3.020	3891.20	3.099	3926s	3.089	39632	3.096
3867z.60	3.017	3870p.60	3.010	3896b.60	3.099	3927	3.100	3963h	3.085
38683.90	3.017	3870p90.60	3.012	3897a.60	3.099	392805	3.082	3963s	3.086
3868a.60	2.102	3870q.60	3.010	3897b.60	3.099	392805s	3.083	3963sh	3.086
3868c.90	3.017	3870q90.60	3.012	389805	3.080	392808	3.082	396405	3.082
3868d.60	3.017	38711c.20	3.013	389808	3.080	392808s	3.083	396408	3.082
3868h.70	3.017	38712c.60	3.013	389905	3.080	3929	3.100	39642	3.094
3868l.60	2.097	3871a.60	3.013	389905s	3.081	3930pa	3.077	396505	3.082
3868m.20	3.015	3871a2sba.90	3.015	389908	3.080	3930pe	3.077	396508	3.082
3868p.60	2.097	3871b.60	3.012	389908s	3.081	3930pv	3.077	39652	3.094
3868q.20	3.017	3871c.60	3.013	39	4.003	39311pa	3.077	3966	3.084
3868r.20	3.015	3871d.60	3.020	390005	3.080	39314pa	3.077	39662	3.096
3868t.60	2.098	3871h.90	3.020	390005s	3.081	3931pa	3.077	3966h	3.085
3868u.60	3.017	3871l.80	3.015	390008	3.080	393205s	3.083	3966s	3.086
3868v.90	3.017	3871ls.80	3.015	390008s	3.081	393208s	3.083	3966sh	3.086
3868w.60	3.017	3871r02.80	3.023	3900208	3.092	3933	3.088	3967	3.084
3868x.60	3.017	3871r04.80	3.023	3901	3.082	3933s	3.089	3967h	3.085
3868x.70	3.017	3871r06.80	3.023	39012	3.094	393405	3.082	3967s	3.086
3868y.60	2.102	3871r08.80	3.023	3901s	3.083	393405s	3.083	3967sh	3.086
3868z.70	3.015	3871r10.80	3.023	3902	3.082	393408	3.082	3968	4.038
3869.60	3.017	3871r12.80	3.023	39022	3.094	393408s	3.083	3970	3.087
38692.60	3.017	3871r14.80	3.023	3902s	3.083	3935pe	3.077	3970s	3.088
38692.70	3.017	3871r16.80	3.023	3903	3.084	3935wpv	3.077	3970sh	3.089
386945.60	3.018	387202	3.026	39032	3.096	39361pa	3.077	3972s	3.088



Verbindungstechnik

# Artikelnummerverzeichnis

## Registre numéro d'article

## Article number index

Art.No.	Seite/Page	Art.No.	Seite/Page	Art.No.	Seite/Page	Art.No.	Seite/Page	Art.No.	Seite/Page
3972sh	3.089	3988n	4.014	440108.40	3.058	441220.40	3.058	4506b11.60	3.059
3973b	4.015	3990	3.106	440110.40	3.058	441222.40	3.058	4506b12.60	3.059
3974n	4.016	3991	3.105	440112.40	3.058	441225.40	3.058	4506b15.60	3.059
3975b	4.012	3992	3.107	440130.40	3.058	441230.40	3.058	4506b20.60	3.059
3975c	4.012	3993	4.016	440206.40	3.058	441232.40	3.058	4507a06.60	3.059
3975d	4.010	3994	4.016	440208.40	3.058	441240.40	3.058	4507a08.60	3.059
3975f	4.012	399848a	4.007	440210.40	3.058	441322.40	3.058	4507a10.60	3.059
3980n	4.014	399848b	4.007	440212.40	3.058	441325.40	3.058	4507a12.60	3.059
3980p	4.014	399848c	4.007	440220.40	3.058	441332.40	3.058	4507a15.60	3.059
3981an	4.014	399863a	4.007	440306.40	3.058	441420.40	3.058	4507a20.60	3.059
3982cn	4.011	399863b	4.007	440308.40	3.058	441425.40	3.058	4507b04.60	3.059
3982cn.11	4.011	4	4.002	440310.40	3.058	441432.40	3.058	4507b06.60	3.059
3982cn.12	4.011	40	4.003	440312.40	3.058	441532.40	3.058	4507b08.60	3.059
3982cn.13	4.011	400.20	2.054	440320.40	3.058	441632.40	3.058	4507b10.60	3.059
3982cn.14	4.011	4000	4.041	440406.40	3.058	4451	3.103	4507b12.60	3.059
3982cn.15	4.011	4000m.1	4.042	440407.40	3.058	4461	3.103	4507b15.60	3.059
3982cn.16	4.011	4000m.2	4.042	440408.40	3.058	449905.40	3.058	4507b20.60	3.059
3982cn.17	4.011	4000m.3	4.042	440410.40	3.058	449907.40	3.058	4507b30.60	3.059
3982cn.18	4.011	4000m.4	4.042	440412.40	3.058	45	4.003	4508a06.60	3.059
3982cn.19	4.011	4000m.5	4.042	440415.40	3.058	450.68	2.054	4508a08.60	3.059
3982cn.20	4.011	4000p.1	4.042	440418.40	3.058	450006.60	3.059	4508a12.60	3.059
3982cn.21	4.011	4000p.2	4.043	440420.40	3.058	450008.60	3.059	4508a15.60	3.059
3982cn.22	4.011	4000p.3	4.043	440505.40	3.058	450012.60	3.059	4508a20.60	3.059
3982cn.23	4.011	4000p.5	4.043	440506.40	3.058	450104.60	3.059	4508a30.60	3.059
3982cn.24	4.011	4000p.6	4.043	440507.40	3.058	450106.60	3.059	4508b06.60	3.059
3982cn.25	4.011	4000p.7	4.043	440508.40	3.058	450107.60	3.059	4508b08.60	3.059
3982cn.26	4.011	4000p.8	4.043	440510.40	3.058	450108.60	3.059	4508b12.60	3.059
3982cn.27	4.011	408.60	2.054	440512.40	3.058	450110.60	3.059	4508b15.60	3.059
3982cn.28	4.011	408068	2.054	440515.40	3.058	450112.60	3.059	4508b18.60	3.059
3982cn.29	4.011	41	4.003	440518.40	3.058	450115.60	3.059	4508b20.60	3.059
3982cn.30	4.011	410.48	2.054	440520.40	3.058	450118.60	3.059	4508b30.60	3.059
3982cn.31	4.011	4120	4.003	440530.40	3.058	450120.60	3.059	4509a06.60	3.059
3982e	4.010	4121	4.003	440608.40	3.058	450206.60	3.059	4509a08.60	3.059
3982g	4.010	4122	4.003	440609.40	3.058	450207.60	3.059	4509a12.60	3.060
3983an	4.015	4123	4.003	440610.40	3.058	450208.60	3.059	4509a15.60	3.060
3983bn	4.015	4151	3.104	440612.40	3.058	450210.60	3.059	4509a20.60	3.060
3983cn	4.015	4155	4.033	440615.40	3.058	450212.60	3.059	4509a30.60	3.060
3983d	4.015	4158	4.036	440618.40	3.058	450215.60	3.059	4509a40.60	3.060
3983p	4.013	4165	4.033	440620.40	3.058	450220.60	3.059	4509b06.60	3.060
3983p.1	4.013	4182	4.028	440630.40	3.058	450306.60	3.059	4509b08.60	3.060
3983p.2	4.013	4188	4.030	440704.40	3.058	450307.60	3.059	4509b12.60	3.060
3983p.3	4.013	4191	4.031	440706.40	3.058	450308.60	3.059	4509b15.60	3.060
3983p.4	4.013	4192	4.034	440710.40	3.058	450309.60	3.059	4509b20.60	3.060
3983s	4.013	4192.1	4.036	440712.40	3.058	450310.60	3.059	4509b30.60	3.060
3984a	4.023	41921000.1	4.035	440715.40	3.058	450312.60	3.059	4509b40.60	3.060
3984ax	4.023	4192500.1	4.035	440718.40	3.058	450315.60	3.059	4510a12.60	3.060
3984b	4.023	4192750.1	4.035	440720.40	3.058	450320.60	3.059	4510a15.60	3.060
3984bx	4.023	4193	4.035	440725.40	3.058	450406.60	3.059	4510a18.60	3.060
3984c	4.023	4193.2	4.035	440730.40	3.058	450407.60	3.059	4510a20.60	3.060
3984cwx	4.023	4193.3	4.035	440812.40	3.058	450408.60	3.059	4510a40.60	3.060
3984cx	4.023	42	4.003	440815.40	3.058	450410.60	3.059	4510b08.60	3.060
3984e	4.023	4242	4.031	440816.40	3.058	450412.60	3.059	4510b12.60	3.060
3984ex	4.023	4245	4.031	440818.40	3.058	450415.60	3.059	4510b15.60	3.060
3984f	4.023	4250	4.032	440820.40	3.058	450420.60	3.059	4510b18.60	3.060
3984fx	4.023	4252	4.032	440825.40	3.058	450505.60	3.059	4510b20.60	3.060
3984g	4.023	4255	4.031	440912.40	3.058	450506.60	3.059	4510b30.60	3.060
3984gx	4.023	4258	4.034	440915.40	3.058	450507.60	3.059	451120.60	3.060
3984h	4.023	4260	4.032	440918.40	3.058	450508.60	3.059	451130.60	3.060
3984j	4.023	4261	4.037	440920.40	3.058	450510.60	3.059	451215.60	3.060
3984k	4.023	4262	4.028	440922.40	3.058	450512.60	3.059	451218.60	3.060
3984l	4.023	4262.1	4.028	440925.40	3.058	450515.60	3.059	451220.60	3.060
3984lx	4.023	4262.2	4.028	440930.40	3.058	450520.60	3.059	451230.60	3.060
3984m	4.023	4263	4.037	440932.40	3.058	450530.60	3.059	451320.60	3.060
3984n	4.023	4265	4.032	441012.40	3.058	4505b05.60	3.059	451322.60	3.060
3984o	4.023	4270	4.034	441015.40	3.058	4505b08.60	3.059	451330.60	3.060
3984ox	4.023	4281	4.037	441018.40	3.058	4505b10.60	3.059	451420.60	3.060
3984ptm	4.040	4282	4.037	441020.40	3.058	4505b12.60	3.059	451426.60	3.060
3984s	4.023	43	4.003	441025.40	3.058	4505b20.60	3.059	451430.60	3.060
3984tz	4.022	4326	4.035	441028.40	3.058	4506a06.60	3.059	451520.60	3.060
3984tzk	4.022	4327	4.036	441032.40	3.058	4506a08.60	3.059	451530.60	3.060
3986c	4.016	4327.1	4.036	441112.40	3.058	4506a10.60	3.059	451620.60	3.060
3986f	4.024	4327.2	4.036	441115.40	3.058	4506a12.60	3.059	451630.60	3.060
3986g	4.017	4327.3	4.036	441118.40	3.058	4506a15.60	3.059	4517	4.018
3986h	4.024	440005.40	3.058	441120.40	3.058	4506a20.60	3.059	4518n	4.020
3986n	4.012	440007.40	3.058	441125.40	3.058	4506a30.60	3.059	4521	4.020
3986r	4.024	440010.40	3.058	441130.40	3.058	4506b06.60	3.059	4522	4.019
3986s	4.016	440015.40	3.058	441132.40	3.058	4506b08.60	3.059	4523n	4.019
3986t	4.012	440106.40	3.058	441218.40	3.058	4506b10.60	3.059	4526n	4.020

Art.No.	Seite/Page	Art.No.	Seite/Page	Art.No.	Seite/Page	Art.No.	Seite/Page	Art.No.	Seite/Page
4527	4.018	460512	3.061	470310d	3.065	490818d	3.065	6407c.90	1.038
4531	4.018	460512d	3.065	470312	3.061	490912	3.062	64084c.60	1.038
4535	4.021	460512ks	3.066	470312d	3.065	490912ks	3.066	64085c.60	1.038
4536	4.018	460518	3.061	470318d	3.065	490914d	3.065	6409.60	1.039
4537	4.019	460518d	3.065	470406	3.061	490918	3.062	6410.60	1.037
4538n	4.020	460609	3.061	470406w	3.061	491016	3.062	6412.55	1.037
4539n	4.020	460610	3.061	470408	3.061	491018	3.062	6413a.50	1.037
4542	4.018	460610ks	3.066	470408.00050	3.063	491022	3.062	6414.55	1.037
4545	4.021	460612	3.061	470408.05000	3.064	491116	3.062	6414a.59	1.037
4548	4.039	460612d	3.065	470408d	3.065	491118	3.062	6414c.50	1.039
459706	3.061	460618	3.061	470408ks	3.066	491125	3.062	6414c.90	1.039
459708	3.061	460618d	3.065	470408w	3.061	491220	3.062	6416.55	1.037
459906	3.061	460712	3.062	470410	3.061	491225	3.062	6417c.60	1.038
459908	3.061	460714d	3.065	470410d	3.065	4950	3.101	6417c.80	1.038
459908.05000	3.064	460718	3.062	470410ks	3.066	4950d	3.102	6417c.90	1.038
46	4.003	460718d	3.065	470412	3.061	4960	3.101	6417g.60	1.038
460006	3.061	460812	3.062	470412d	3.065	5	4.002	6418.55	1.037
460008	3.061	460814d	3.065	470414	3.061	5000.99	1.034	6419g.60	1.038
460106	3.061	460818	3.062	470418	3.061	5001.99	1.034	6420.50	1.037
460106d	3.065	460818d	3.065	470418d	3.065	5002.99	1.034	6422.50	1.037
460108	3.061	460912	3.062	470508	3.061	5003.99	1.034	6424a.55	1.037
460108.00050	3.063	460914d	3.065	470508.00040	3.063	5004.99	1.034	6425b.55	1.037
460108.05000	3.064	460918	3.062	470508.00050	3.063	5004a.99	1.034	6431a.90	2.048
460108d	3.065	461016	3.062	470508.03000	3.064	5005.95	1.034	6432.50	1.037
460110	3.061	461018	3.062	470508s	3.061	5005.99	1.034	6441.50	1.037
460110d	3.065	461022	3.062	470509d	3.065	5006.99	1.034	6442.80	1.039
460112	3.061	461116	3.062	470512	3.061	5007.99	1.034	6443.60	1.039
460112d	3.065	461118	3.062	470512d	3.065	51	4.002	6444.50	1.037
460206	3.061	461125	3.062	470518	3.061	5100.99	1.034	6445.50	1.039
460206d	3.065	461220	3.062	470518d	3.065	5101.99	1.034	6464.95	1.037
460206w	3.061	461225	3.062	470609	3.061	5102.99	1.034	65	4.002
460208	3.061	461230	3.062	470610	3.061	5103.99	1.034	650.60	2.066
460208.00050	3.063	461321	3.062	470612	3.061	5112.65	1.035	6500e.65	1.038
460208.05000	3.064	461425	3.062	470612d	3.065	5112.95	1.035	6501e.60	1.038
460208d	3.065	461530	3.062	470618	3.061	5112.99	1.035	6501g.60	1.038
460208w	3.061	461632	3.062	470618d	3.065	5113.65	1.035	6502e.60	1.038
460210	3.061	4650	3.101	470712	3.062	5114.60	1.035	6503e.90	1.038
460210d	3.065	4650d	3.102	470714d	3.065	5114.99	1.035	6503f.60	1.038
460210w	3.061	4660	3.101	470718	3.062	5115.99	1.035	6503g.90	1.038
460212	3.061	469706	3.061	470718d	3.065	5116.99	1.035	6504e.60	1.038
460212d	3.065	469708	3.061	470812	3.062	5117.80	1.035	6504e.90	1.038
460218d	3.065	469806	3.061	470814d	3.065	5118.95	1.035	6505e.80	1.038
460306	3.061	469808	3.061	470818	3.062	5118.99	1.035	6505f.60	1.038
460306d	3.065	469906	3.061	470818d	3.065	5120a.99	1.035	6505k.80	1.038
460308	3.061	469908	3.061	470912	3.062	5120b.99	1.035	6506e.90	1.038
460308.00050	3.063	47	4.003	470914d	3.065	5121.99	1.035	6507e.80	1.038
460308.05000	3.064	470006	3.061	470918	3.062	5122.99	1.035	655.60	2.066
460308d	3.065	470008	3.061	471016	3.062	5123.69	1.035	656.60	2.066
460308w	3.061	470106	3.061	471018	3.062	5124.60	1.036	657.60	2.066
460310	3.061	470106d	3.065	471022	3.062	5125.99	1.036	66	4.002
460310d	3.065	470108	3.061	4750	3.101	5126.60	1.036	660.60	2.066
460310w	3.061	470108.00050	3.063	4750d	3.102	5130.99	1.036	661.60	2.066
460312	3.061	470108.05000	3.064	4760	3.101	5135.99	1.036	663.60	2.066
460312d	3.065	470108d	3.065	4801	3.056	5135.pr	1.036	664.60	2.066
460318d	3.065	470110	3.061	4803	3.056	52	4.002	665.60	2.061
460406	3.061	470110d	3.065	4805	3.056	53	4.002	67	4.002
460406w	3.061	470112	3.061	4809	3.056	54	4.002	68	4.002
460408	3.061	470112d	3.065	490206	3.061	55	4.002	69	4.002
460408.00050	3.063	470206	3.061	490206d	3.065	56	4.002	7	4.002
460408.05000	3.064	470206d	3.065	490208	3.061	57	4.002	70	4.002
460408d	3.065	470208	3.061	490208.00050	3.063	58	4.002	71	4.002
460408w	3.061	470208.00050	3.063	490208.05000	3.064	59	4.002	72	4.002
460410	3.061	470208.05000	3.064	490208d	3.065	6	4.002	735.60	2.064
460410d	3.065	470208d	3.065	490208w	3.061	60	4.002	738.60	2.064
460410w	3.061	470208w	3.061	490210	3.061	61	4.002	74	4.002
460412	3.061	470210	3.061	490210d	3.065	62	4.002	740.60	2.064
460412d	3.065	470210d	3.065	490212	3.061	63	4.002	7409a.90	2.047
460414	3.061	470212	3.061	490212d	3.065	64	4.002	7409s.90	2.047
460418	3.061	470212d	3.065	490218d	3.065	6401c.60	1.038	742.60	2.064
460418d	3.065	470218d	3.065	490712	3.062	6402c.60	1.038	75	4.002
460508	3.061	470306	3.061	490712ks	3.066	6403c.60	1.038	750.60	2.064
460508.00040	3.063	470306d	3.065	490714d	3.065	6403e.60	1.038	751.60	2.065
460508.00050	3.063	470308	3.061	490718	3.062	6405c.90	1.038	755.60	2.065
460508.03000	3.064	470308.00050	3.063	490718d	3.065	64064c.80	1.038	76	4.002
460508ks	3.066	470308.05000	3.064	490812	3.062	64064c.90	1.038	760.60	2.065
460508s	3.061	470308d	3.065	490812ks	3.066	64064d.80	1.038	762.60	2.065
460509d	3.065	470308w	3.061	490814d	3.065	64065c.90	1.038	765.60	2.065
460510	3.061	470310	3.061	490818	3.062	6407c.60	1.038	7663.99	1.012



Verbindungstechnik

# Artikelnummerverzeichnis Registre numéro d'article Article number index

Art.No.	Seite/Page	Art.No.	Seite/Page	Art.No.	Seite/Page	Art.No.	Seite/Page	Art.No.	Seite/Page
7664.65	1.012	955.60	2.031	a13025020.60	1.004	a20125050.60	1.005	a30050025.60	1.005
7666.65	1.012	96	4.002	a13060020.60	1.004	a20130025.60	1.005	a30050030.60	1.005
7668.65	1.012	960.60	2.031	a14020020.60	1.004	a20140030.60	1.005	a30050040.60	1.005
7669.65	1.012	964.68	2.031	a14045020.60	1.004	a20150030.60	1.005	a30050050.60	1.005
7671.99	1.012	965.20	2.031	a15020025.60	1.004	a20160025.60	1.005	a30055030.60	1.005
7672.65	1.012	967.68	2.031	a15022020.40	1.004	a20160030.60	1.005	a30060030.60	1.005
768.60	2.065	969.68	2.031	a15025020.40	1.004	a20180030.60	1.005	a30060040.60	1.005
7682.99	1.012	969f.60	2.031	a15025025.40	1.004	a20200040.60	1.005	a30065030.60	1.005
76b	4.002	970.60	2.031	a15025025.60	1.004	a20210030.60	1.005	a30070030.60	1.005
77	4.002	971.60	2.031	a15030020.40	1.004	a20220020.60	1.005	a30070040.60	1.005
770.60	2.065	972.60	2.031	a15030020.60	1.004	a20230025.60	1.005	a30075030.40	1.005
774.60	2.062	973.400	2.031	a15032025.40	1.004	a20250030.60	1.005	a30075030.60	1.005
775.60	2.065	975.20	2.031	a15035020.40	1.004	a20300030.60	1.005	a30080030.60	1.005
779.60	2.062	978.68	2.031	a15035020.60	1.004	a20320025.60	1.005	a30085030.60	1.005
78	4.002	980.68	2.031	a15040020.60	1.004	a20400020.60	1.005	a30088030.40	1.005
780.60	2.062	985.60	2.026	a15040025.60	1.004	a20500030.60	1.005	a30090030.60	1.005
781.60	2.062	993.20	2.032	a15045020.60	1.004	a22025015.60	1.005	a30100025.60	1.005
782.60	2.062	994.60	2.031	a15050020.60	1.004	a22025025.60	1.005	a30100030.60	1.005
783.60	2.062	995.60	2.032	a15055020.60	1.004	a22040025.60	1.005	a30100030.90	1.005
784.60	2.062	997.60	2.031	a15060020.60	1.004	a22050025.60	1.005	a30100050.60	1.005
785.60	2.062	998.20	2.031	a15060025.60	1.004	a22170025.60	1.005	a30110030.60	1.005
786.60	2.062	999.20	2.032	a15070020.60	1.004	a24055025.60	1.005	a30120030.60	1.005
789.60	2.062	a08010020.60	1.004	a15075025.40	1.004	a24150025.60	1.005	a30120030.90	1.005
79	4.002	a08015020.60	1.004	a15080020.60	1.004	a25025030.60	1.005	a30124030.60	1.005
790.60	2.062	a08020020.60	1.004	a15100020.60	1.004	a25030030.60	1.005	a30130030.60	1.005
791.60	2.062	a08025020.60	1.004	a15110025.40	1.004	a25035025.60	1.005	a30140030.60	1.005
792.60	2.062	a08030020.60	1.004	a15110025.60	1.004	a25035030.60	1.005	a30150030.60	1.005
793.60	2.062	a08035020.60	1.004	a15120025.60	1.004	a25040030.60	1.005	a30160030.60	1.005
793a.68	2.061	a08040020.40	1.004	a15130020.60	1.004	a25045030.10	1.005	a30162025.60	1.005
794.60	2.062	a08040020.60	1.004	a15140020.60	1.004	a25045030.60	1.005	a30165025.60	1.005
795.60	2.062	a08045020.60	1.004	a15140025.60	1.004	a25050025.60	1.005	a30170030.60	1.005
796.60	2.062	a08050020.60	1.004	a15170025.60	1.004	a25050030.60	1.005	a30190030.60	1.005
797.60	2.062	a08060020.60	1.004	a15200025.60	1.004	a25050040.60	1.005	a30200030.60	1.005
798.60	2.062	a08070020.60	1.004	a15265025.40	1.004	a25055025.60	1.005	a30215025.60	1.005
799.60	2.062	a08080020.60	1.004	a15300025.60	1.004	a25055030.60	1.005	a30220030.60	1.005
8	4.002	a08090020.60	1.004	a15440025.60	1.004	a25060030.60	1.005	a30230030.60	1.005
805.60	2.063	a08100020.60	1.004	a15470025.60	1.004	a25065030.60	1.005	a30237030.60	1.005
810.60	2.063	a10003005060	1.006	a16025015.60	1.004	a25070030.60	1.005	a30240030.60	1.005
815.60	2.063	a10010020.60	1.004	a16025020.60	1.004	a25070040.60	1.005	a30258040.60	1.005
816.60	2.063	a10015015.60	1.004	a16040020.60	1.004	a25075025.60	1.005	a30290030.60	1.005
817.60	2.063	a10015020.60	1.004	a17016020.40	1.004	a25080030.60	1.005	a30310030.60	1.005
820.60	2.063	a10020020.60	1.004	a17030020.60	1.004	a25080040.60	1.005	a30350030.60	1.005
825.60	2.063	a10022015.40	1.004	a17040020.60	1.004	a25085030.60	1.005	a30525040.60	1.005
83	4.002	a10025020.60	1.004	a20015020.60	1.004	a25090025.60	1.005	a32180020.60	1.005
84	4.002	a10030020.60	1.004	a20015025.40	1.004	a25090030.60	1.005	a32185020.60	1.005
84s	4.003	a10035020.60	1.004	a20018020.60	1.004	a25090040.60	1.005	a35040030.60	1.005
85	4.002	a10040020.60	1.004	a20020020.60	1.004	a25095030.60	1.005	a35050030.60	1.005
8500.62	2.050	a10045020.60	1.004	a20020025.60	1.004	a25100025.60	1.005	a35060030.60	1.005
8502.62	2.050	a10050020.60	1.004	a20020030.60	1.004	a25100030.60	1.005	a35080030.60	1.005
8504.62	2.050	a10055020.60	1.004	a20025030.60	1.004	a25100040.60	1.005	a35115003060	1.005
8506.62	2.050	a10060020.60	1.004	a20030025.60	1.004	a25110025.60	1.005	a35130030.60	1.005
86	4.002	a10070020.60	1.004	a20030030.60	1.004	a25110030.60	1.005	a35160030.60	1.005
8600.22	2.050	a10078020.60	1.004	a20035025.60	1.004	a25115030.60	1.005	a35180030.60	1.005
8601.22	2.050	a10080020.60	1.004	a20035030.60	1.004	a25120030.60	1.005	a35185030.60	1.005
8602.22	2.050	a10100020.60	1.004	a20040025.60	1.004	a25150030.60	1.005	a35400030.60	1.005
8610.22	2.050	a10120020.60	1.004	a20040030.40	1.004	a25160030.60	1.005	a38102030.60	1.005
8611.22	2.050	a10130020.60	1.004	a20040030.60	1.004	a25180025.60	1.005	a38142030.60	1.005
8612.22	2.050	a12015020.40	1.004	a20045030.60	1.004	a25200030.60	1.005	a40017020.60	1.005
86s	4.003	a12020020.40	1.004	a20050030.40	1.004	a25250030.60	1.005	a40020020.60	1.005
88	4.003	a12020020.60	1.004	a20050030.60	1.004	a25270030.60	1.005	a40023020.60	1.005
9	4.002	a12025020.60	1.004	a20055025.60	1.004	a25300040.60	1.005	a40030030.60	1.005
90	4.002	a12028020.40	1.004	a20060030.60	1.004	a25385030.60	1.005	a40035030.60	1.005
91	4.002	a12030020.60	1.004	a20065030.60	1.004	a25430030.60	1.005	a40040020.60	1.005
93	4.002	a12035020.60	1.004	a20070030.60	1.004	a25465030.60	1.005	a40040040.60	1.005
930.20	2.031	a12040020.60	1.004	a20070040.60	1.004	a26040020.60	1.005	a40050040.60	1.005
931.68	2.031	a12045020.60	1.004	a20075025.60	1.005	a28035030.60	1.005	a40055040.60	1.005
935.20	2.031	a12046020.40	1.004	a20080030.60	1.005	a28045030.60	1.005	a40060040.60	1.005
936.20	2.031	a12050020.60	1.004	a20080040.60	1.005	a28155030.60	1.005	a40070040.60	1.005
94	4.002	a12060020.60	1.004	a20090030.60	1.005	a30025025.60	1.005	a40075030.60	1.005
940.60	2.031	a12062020.40	1.004	a20090040.60	1.005	a30030030.60	1.005	a40080030.60	1.005
945.60	2.031	a12065020.60	1.004	a20095030.60	1.005	a30035025.60	1.005	a40080040.60	1.005
946.28	2.031	a12070020.60	1.004	a20100030.60	1.005	a30035030.60	1.005	a40090020.60	1.005
947.28	2.031	a12100020.60	1.004	a20105050.60	1.005	a30035050.60	1.005	a40096040.60	1.005
948.60	2.031	a12110020.40	1.004	a20110030.60	1.005	a30038025.60	1.005	a40100025.60	1.005
95	4.002	a12120020.40	1.004	a20120020.60	1.005	a30040025.60	1.005	a40100030.60	1.006
950.60	2.031	a12145020.60	1.004	a20120025.60	1.005	a30040030.60	1.005	a40100040.60	1.006
951.60	2.031	a12150020.60	1.004	a20120030.60	1.005	a30042025.60	1.005	a40105040.60	1.006
953.60	2.031	a12180020.60	1.004	a20120040.60	1.005	a30045030.60	1.005	a40110020.60	1.006

Art.No.	Seite/Page	Art.No.	Seite/Page	Art.No.	Seite/Page	Art.No.	Seite/Page	Art.No.	Seite/Page
a40110030.60	1.006	ah1e151.pa	1.021	b15045020.60	1.007	b22165025.60	1.007	b30025030.60	1.008
a40120040.60	1.006	ah1e183.pa	1.021	b15050020.60	1.007	b22170025.60	1.007	b30030025.60	1.008
a40127055.10	1.006	ah1e215.pa	1.021	b15055020.60	1.007	b23035025.60	1.007	b30030030.60	1.008
a40130040.60	1.006	ah1e245.pa	1.021	b15058025.60	1.007	b23050025.60	1.007	b30035025.60	1.008
a40140040.60	1.006	ah2e032.pa	1.020	b15065020.60	1.007	b23100025.60	1.007	b30035030.60	1.008
a40150030.60	1.006	ah2e040.pa	1.020	b15070020.60	1.007	b24025025.60	1.007	b30040030.60	1.008
a40170030.60	1.006	ah2e050.pa	1.020	b15070025.60	1.007	b24045030.60	1.007	b30045025.60	1.008
a40220030.60	1.006	ah2e060.pa	1.020	b15075020.60	1.007	b24065025.60	1.007	b30045050.60	1.008
a40250040.60	1.006	ah2e070.pa	1.020	b15080020.60	1.007	b24070025.60	1.007	b30050025.60	1.008
a40280040.60	1.006	ah2e080.pa	1.020	b15090025.60	1.007	b24090025.60	1.007	b30050030.60	1.008
a48027030.60	1.006	ah2e090.pa	1.020	b15100020.60	1.007	b24100025.60	1.007	b30050040.60	1.008
a48040040.60	1.006	ah2e100.pa	1.020	b15100025.60	1.007	b24100025.80	1.007	b30050050.60	1.008
a48060040.60	1.006	ah2e110.pa	1.020	b15110020.60	1.007	b24150025.60	1.007	b30055030.60	1.008
a50026025.60	1.006	ah2e120.pa	1.020	b15120020.60	1.007	b24150030.60	1.007	b30060025.60	1.008
a50030025.60	1.006	ah2e130.pa	1.020	b15130025.60	1.007	b24200030.60	1.007	b30060030.60	1.008
a50040025.60	1.006	ah2e140.pa	1.020	b15150020.60	1.007	b25025025.60	1.007	b30060050.60	1.008
a50040050.60	1.006	ah2e150.pa	1.020	b15160025.60	1.007	b25025030.60	1.007	b30065020.60	1.008
a50042025.60	1.006	ah2e160.pa	1.020	b15240025.60	1.007	b25030025.60	1.007	b30065025.60	1.008
a50043025.60	1.006	ah2e170.pa	1.020	b15240025.60	1.007	b25035025.60	1.007	b30065030.60	1.008
a50045050.60	1.006	ah2e180.pa	1.020	b17028020.40	1.007	b25035025.68	1.008	b30070020.60	1.008
a50050050.60	1.006	ah2e190.pa	1.020	b17030020.60	1.007	b25035030.60	1.008	b30070025.60	1.008
a50065050.60	1.006	ah2e200.pa	1.020	b17070020.60	1.007	b25040025.60	1.008	b30070030.10	1.008
a50070050.60	1.006	ah3e032.pa	1.020	b17080020.60	1.007	b25040030.60	1.008	b30070030.60	1.008
a50080050.60	1.006	ah3e040.pa	1.020	b17090020.60	1.007	b25045025.60	1.008	b30075030.60	1.008
a50100025.60	1.006	ah3e050.pa	1.020	b17110020.60	1.007	b25045030.60	1.008	b30080025.60	1.008
a50100050.60	1.006	ah3e060.pa	1.020	b20020020.60	1.007	b25050025.60	1.008	b30080030.60	1.008
a50100050.90	1.006	ah3e070.pa	1.020	b20020025.60	1.007	b25055030.60	1.008	b30085030.60	1.008
a50110025.60	1.006	ah3e080.pa	1.020	b20025025.60	1.007	b25060025.60	1.008	b30090025.60	1.008
a50120050.60	1.006	ah3e090.pa	1.020	b20030020.60	1.007	b25060030.60	1.008	b30090030.60	1.008
a50130025.60	1.006	ah3e100.pa	1.020	b20030025.60	1.007	b25065025.60	1.008	b30095025.60	1.008
a50200050.40	1.006	ah3e110.pa	1.020	b20030030.60	1.007	b25065030.60	1.008	b30100025.60	1.008
a50210035.60	1.006	ah3e120.pa	1.020	b20035020.60	1.007	b25070025.60	1.008	b30100025.60	1.008
a50230035.60	1.006	ah3e130.pa	1.020	b20035025.60	1.007	b25070030.60	1.008	b30100030.60	1.008
a50250050.60	1.006	ah3e140.pa	1.020	b20035030.60	1.007	b25070040.60	1.008	b30100050.60	1.008
a60030025.60	1.006	ah3e150.pa	1.020	b20035035.60	1.007	b25075025.60	1.008	b30110030.60	1.008
a60040025.60	1.006	ah3e160.pa	1.020	b20038030.60	1.007	b25080025.60	1.008	b30120030.60	1.008
a60060025.60	1.006	ah3e170.pa	1.020	b20040025.60	1.007	b25080030.60	1.008	b30130030.60	1.008
a60080050.60	1.006	ah3e180.pa	1.020	b20040030.60	1.007	b25080040.60	1.008	b30140030.60	1.008
a60090030.60	1.006	ah3e190.pa	1.020	b20045025.60	1.007	b25085030.60	1.008	b30145025.60	1.008
a60100025.60	1.006	ah3e200.pa	1.020	b20045030.60	1.007	b25090015.60	1.008	b30150030.60	1.008
a60100050.60	1.006	b10015020.60	1.007	b20050025.60	1.007	b25090025.60	1.008	b30160020.60	1.008
a60100050.90	1.006	b10020015.40	1.007	b20050030.60	1.007	b25090030.60	1.008	b30160030.60	1.008
a60125050.60	1.006	b10020020.60	1.007	b20055025.60	1.007	b25095030.60	1.008	b30170030.60	1.008
a60140025.60	1.006	b10030020.60	1.007	b20060025.60	1.007	b25095040.10	1.008	b30180030.60	1.008
a60150050.60	1.006	b10035020.60	1.007	b20060030.60	1.007	b25095040.60	1.008	b30180050.60	1.008
a60165050.60	1.006	b10050020.60	1.007	b20065030.60	1.007	b25100015.60	1.008	b30190030.60	1.008
a60190050.60	1.006	b10090020.60	1.007	b20070025.60	1.007	b25100025.60	1.008	b30200030.60	1.008
a60250050.60	1.006	b10095020.60	1.007	b20070030.60	1.007	b25100030.60	1.008	b30205050.80	1.008
a60300050.60	1.006	b10100020.60	1.007	b20070040.60	1.007	b25100040.60	1.008	b30220030.60	1.008
a60350050.60	1.006	b10180020.60	1.007	b20080030.60	1.007	b25120025.60	1.008	b30223020.60	1.008
a60400050.60	1.006	b12015020.60	1.007	b20080040.60	1.007	b25130025.60	1.008	b30250030.60	1.008
a60430050.60	1.006	b12016020.40	1.007	b20090025.60	1.007	b25140030.60	1.008	b30250050.60	1.008
a60530050.80	1.006	b12020020.40	1.007	b20090030.60	1.007	b25140040.60	1.008	b30260020.60	1.008
a70090050.60	1.006	b12020020.60	1.007	b20090040.60	1.007	b25150025.60	1.008	b30260030.60	1.008
a70150050.60	1.006	b12025020.60	1.007	b20095030.60	1.007	b25170025.60	1.008	b30300030.60	1.008
a75050025.60	1.006	b12030020.60	1.007	b20100020.60	1.007	b25170030.60	1.008	b30350050.60	1.008
a80100050.60	1.006	b12035020.60	1.007	b20100030.60	1.007	b25180025.60	1.008	b30400030.60	1.008
a80155050.60	1.006	b12040020.60	1.007	b20120030.60	1.007	b25180040.60	1.008	b32050020.60	1.008
a90080030.60	1.006	b12050020.60	1.007	b20130025.60	1.007	b25200030.60	1.008	b32060030.60	1.008
a90100030.60	1.006	b12055020.60	1.007	b20130030.60	1.007	b25220030.60	1.008	b32070020.60	1.008
ah15e085.pa	1.021	b12080020.60	1.007	b20140025.60	1.007	b25230030.60	1.008	b32080020.60	1.008
ah15e120.pa	1.021	b12090020.60	1.007	b20150030.60	1.007	b25260030.60	1.008	b32110020.60	1.008
ah15e151.pa	1.021	b12100020.60	1.007	b20230030.60	1.007	b25330030.60	1.008	b32130020.60	1.008
ah15e183.pa	1.021	b12120020.60	1.007	b22025025.60	1.007	b26026020.60	1.008	b32242020.60	1.008
ah15e215.pa	1.021	b14012020.60	1.007	b22030025.60	1.007	b26030020.60	1.008	b35030030.60	1.008
ah15e245.pa	1.021	b14030020.60	1.007	b22035025.60	1.007	b26040025.60	1.008	b35035030.60	1.008
ah16e050.pa	1.020	b15015020.60	1.007	b22040025.60	1.007	b26045020.60	1.008	b35040025.60	1.008
ah16e070.pa	1.020	b15017025.60	1.007	b22045025.60	1.007	b26050020.60	1.008	b35040030.60	1.008
ah16e080.pa	1.020	b15020020.60	1.007	b22050025.60	1.007	b26055020.60	1.008	b35045030.60	1.008
ah16e095.pa	1.020	b15025020.60	1.007	b22055025.60	1.007	b26060020.60	1.008	b35050030.60	1.008
ah16e120.pa	1.020	b15025025.60	1.007	b22060025.60	1.007	b26070020.60	1.008	b35055030.60	1.008
ah16e130.pa	1.020	b15030020.40	1.007	b22065025.60	1.007	b26070040.60	1.008	b35060030.60	1.008
ah16e150.pa	1.020	b15030020.60	1.007	b22070025.60	1.007	b26073020.60	1.008	b35070030.60	1.008
ah16e170.pa	1.020	b15030025.60	1.007	b22080025.60	1.007	b26080020.60	1.008	b35080030.60	1.008
ah16e250.pa	1.020	b15035020.60	1.007	b22085025.60	1.007	b26095020.60	1.008	b35090030.60	1.008
ah16e270.pa	1.020	b15035025.60	1.007	b22090025.60	1.007	b26132020.60	1.008	b35100030.60	1.008
ah1e085.pa	1.021	b15035025.60	1.007	b22095025.60	1.007	b28060030.60	1.008	b35110030.60	1.009
ah1e120.pa	1.021	b15040020.60	1.007	b22100025.60	1.007	b30020025.60	1.008	b35150030.60	1.009



Verbindungstechnik

# Artikelnummerverzeichnis Registre numéro d'article Article number index

Art.No.	Seite/Page	Art.No.	Seite/Page	Art.No.	Seite/Page	Art.No.	Seite/Page	Art.No.	Seite/Page
b40030030.60	1.009	b60050025.60	1.009	fk40180.8080	1.002	m25024.00.pa	1.014	m30015.01.ps	1.022
b40030040.60	1.009	b60050030.60	1.009	fk40200.1099	1.002	m25025.00.65	1.010	m30015.11.pa	1.017
b40035030.60	1.009	b60050050.60	1.009	h12080222060	2.057	m25025.00.pa	1.014	m30015.50.65	1.010
b40040030.60	1.009	b60060025.60	1.009	h12170302060	2.057	m25025.01.65	1.011	m30015.51.65	1.011
b40045030.60	1.009	b60060050.40	1.009	h13050252060	2.057	m25026.00.pa	1.014	m30016.00.65	1.010
b40050030.60	1.009	b60060050.60	1.009	h15080252560	2.057	m25028.00.pa	1.014	m30016.00.pa	1.014
b40055030.60	1.009	b60070075.40	1.009	h15080303061	2.057	m25030.00.65	1.010	m30016.01.65	1.011
b40060030.60	1.009	b60080025.60	1.009	h18065303060	2.057	m25030.00.pa	1.014	m30016.01.pa	1.016
b40060040.60	1.009	b60090025.60	1.009	h20060302560	2.057	m25030.01.65	1.011	m30016.11.pa	1.017
b40062030.60	1.009	b60125050.60	1.009	h20080203060	2.057	m25032.00.pa	1.014	m30017.00.65	1.010
b40065030.60	1.009	b60140025.60	1.009	h20080253060	2.057	m25035.00.65	1.010	m30017.00.pa	1.014
b40070030.60	1.009	b60150050.60	1.009	h20080303060	2.057	m25035.00.pa	1.014	m30017.01.65	1.011
b40080030.60	1.009	b60200050.60	1.009	h20080353060	2.057	m25035.01.65	1.011	m30017.01.pa	1.016
b40080040.60	1.009	b60300050.60	1.009	h20170253060	2.057	m25040.00.65	1.010	m30017.11.pa	1.017
b40090030.60	1.009	b75060050.40	1.009	h20170453060	2.057	m25040.01.65	1.011	m30018.00.65	1.010
b40090040.60	1.009	b80060050.60	1.009	h25080303060	2.057	m25045.00.65	1.010	m30018.00.pa	1.014
b40100005060	1.009	b80080050.10	1.009	h33100353060	2.057	m30005.00.65	1.010	m30018.01.65	1.011
b40100030.60	1.009	b80100050.60	1.009	m20004.00.65	1.010	m30005.01.65	1.011	m30018.01.pa	1.016
b40100040.60	1.009	c10063020.40	1.009	m20005.00.65	1.010	m30005.11.pa	1.017	m30018.11.pa	1.017
b40100075.10	1.009	c17040020.40	1.009	m20005.01.65	1.011	m30005.50.65	1.010	m30018.50.65	1.010
b40105040.60	1.009	c45090050.80	1.009	m20006.00.65	1.010	m30005.51.65	1.011	m30018.51.65	1.011
b40110040.60	1.009	fg30100.99	1.003	m20007.00.65	1.010	m30006.00.65	1.010	m30019.00.65	1.010
b40120040.60	1.009	fg40100.80	1.003	m20008.00.65	1.010	m30006.00.pa	1.014	m30019.00.pa	1.014
b40130030.60	1.009	fg40100.99	1.003	m20008.01.65	1.011	m30006.01.pa	1.016	m30019.01.pa	1.016
b40130040.60	1.009	fg40115.80	1.003	m20010.00.65	1.010	m30006.11.pa	1.017	m30019.11.pa	1.017
b40138050.90	1.009	fg40115.99	1.003	m20010.01.65	1.011	m30006.50.65	1.010	m30020.00.65	1.010
b40140030.60	1.009	fg50120.80	1.003	m20012.00.65	1.010	m30007.00.65	1.010	m30020.00.pa	1.014
b40140040.60	1.009	fg50120.99	1.003	m20012.01.65	1.011	m30007.00.pa	1.014	m30020.01.65	1.011
b40160040.60	1.009	fg50135.80	1.003	m20015.00.65	1.010	m30007.11.pa	1.017	m30020.01.pa	1.016
b40160080.80	1.009	fg50150.99	1.003	m20015.01.65	1.011	m30007.50.65	1.010	m30020.01.ps	1.022
b40180020.60	1.009	fg60145.80	1.003	m20018.00.65	1.010	m30008.00.65	1.010	m30020.11.pa	1.017
b40190040.60	1.009	fg60145.99	1.003	m20018.01.65	1.011	m30008.00.pa	1.014	m30020.50.65	1.010
b40200040.60	1.009	fg60160.80	1.003	m20020.00.65	1.010	m30008.01.65	1.011	m30020.51.65	1.011
b40200080.80	1.009	fg60160.99	1.003	m20020.01.65	1.011	m30008.01.pa	1.016	m30021.00.65	1.010
b40220040.60	1.009	fk24040.1099	1.002	m20025.00.65	1.010	m30008.11.pa	1.017	m30021.00.pa	1.014
b40230040.60	1.009	fk24050.1099	1.002	m20025.01.65	1.011	m30008.50.65	1.010	m30021.01.pa	1.016
b40250050.60	1.009	fk24060.1099	1.002	m20030.00.65	1.010	m30008.51.65	1.011	m30021.11.pa	1.017
b40265050.60	1.009	fk24080.1099	1.002	m20030.01.65	1.011	m30009.00.65	1.010	m30022.00.65	1.010
b40300040.60	1.009	fk24100.1099	1.002	m20035.00.65	1.010	m30009.00.pa	1.014	m30022.00.pa	1.014
b40300050.60	1.009	fk30040.1099	1.002	m20035.01.65	1.011	m30009.01.pa	1.016	m30022.01.65	1.011
b40305040.60	1.009	fk30060.1099	1.002	m20040.00.65	1.010	m30009.11.pa	1.017	m30022.01.pa	1.016
b40380030.60	1.009	fk30060.8080	1.002	m20040.01.65	1.011	m30010.00.65	1.010	m30022.11.pa	1.017
b40380040.60	1.009	fk30080.1099	1.002	m20045.00.65	1.010	m30010.00.pa	1.014	m30023.00.pa	1.014
b40400040.60	1.009	fk30080.8080	1.002	m25005.00.65	1.010	m30010.01.65	1.011	m30023.01.pa	1.016
b40420040.60	1.009	fk30100.1099	1.002	m25005.01.65	1.011	m30010.01.pa	1.016	m30023.11.pa	1.017
b40425050.60	1.009	fk30100.8080	1.002	m25006.00.pa	1.014	m30010.11.pa	1.017	m30024.00.pa	1.014
b40485050.60	1.009	fk30120.1099	1.002	m25007.00.pa	1.014	m30010.50.65	1.010	m30024.01.pa	1.016
b40500050.60	1.009	fk30120.8080	1.002	m25008.00.65	1.010	m30010.51.65	1.011	m30024.11.pa	1.017
b40600050.60	1.009	fk30140.1099	1.002	m25008.00.pa	1.014	m30011.00.65	1.010	m30025.00.65	1.010
b45030030.60	1.009	fk30160.1099	1.002	m25008.01.65	1.011	m30011.00.pa	1.014	m30025.00.pa	1.014
b45040025.60	1.009	fk32040.1099	1.002	m25009.00.65	1.010	m30011.01.65	1.011	m30025.01.65	1.011
b45100030.60	1.009	fk32040.8080	1.002	m25009.00.pa	1.014	m30011.01.pa	1.016	m30025.01.pa	1.016
b45120025.60	1.009	fk32050.1099	1.002	m25009.01.65	1.011	m30011.11.pa	1.017	m30025.01.ps	1.022
b48080040.60	1.009	fk32060.1099	1.002	m25010.00.65	1.010	m30011.50.65	1.010	m30025.11.pa	1.017
b50040050.60	1.009	fk32060.8080	1.002	m25010.00.pa	1.014	m30011.51.65	1.011	m30025.50.65	1.010
b50045050.60	1.009	fk32080.1099	1.002	m25010.01.65	1.011	m30012.00.65	1.010	m30025.51.65	1.011
b50050025.60	1.009	fk32080.8080	1.002	m25011.00.pa	1.014	m30012.00.pa	1.014	m30026.00.pa	1.014
b50050050.60	1.009	fk32100.1099	1.002	m25011.01.65	1.011	m30012.01.65	1.011	m30026.01.pa	1.016
b50070025.60	1.009	fk32100.8080	1.002	m25012.00.65	1.010	m30012.01.pa	1.016	m30026.11.pa	1.017
b50080025.60	1.009	fk32120.1099	1.002	m25012.00.pa	1.014	m30012.11.pa	1.017	m30027.00.65	1.010
b50080050.60	1.009	fk32120.8080	1.002	m25012.01.65	1.011	m30012.50.65	1.010	m30027.00.pa	1.014
b50084050.60	1.009	fk32140.1099	1.002	m25013.00.pa	1.014	m30012.51.65	1.011	m30027.01.pa	1.016
b50100025.60	1.009	fk32150.8080	1.002	m25014.00.pa	1.014	m30013.00.65	1.010	m30027.11.pa	1.017
b50100050.60	1.009	fk32160.1099	1.002	m25015.00.65	1.010	m30013.00.pa	1.014	m30028.00.pa	1.014
b50120035.60	1.009	fk32180.1099	1.002	m25015.01.65	1.014	m30013.01.pa	1.016	m30028.01.pa	1.016
b50120050.60	1.009	fk40050.1099	1.002	m25016.00.pa	1.014	m30013.11.pa	1.017	m30028.11.pa	1.017
b50140025.60	1.009	fk40060.1099	1.002	m25016.01.65	1.011	m30013.50.65	1.010	m30029.00.pa	1.014
b50150050.60	1.009	fk40060.8080	1.002	m25017.00.pa	1.014	m30014.00.65	1.010	m30029.01.pa	1.016
b50160050.60	1.009	fk40080.1099	1.002	m25018.00.65	1.010	m30014.00.pa	1.014	m30029.11.pa	1.017
b50166035.60	1.009	fk40080.8080	1.002	m25018.00.pa	1.014	m30014.01.65	1.011	m30030.00.65	1.010
b50170050.60	1.009	fk40100.1099	1.002	m25018.01.65	1.011	m30014.01.pa	1.016	m30030.00.pa	1.014
b50190050.60	1.009	fk40100.8080	1.002	m25019.00.pa	1.014	m30014.11.pa	1.017	m30030.01.65	1.011
b50200075.60	1.009	fk40120.1099	1.002	m25020.00.65	1.010	m30014.50.65	1.010	m30030.01.pa	1.016
b50235075.80	1.009	fk40130.8080	1.002	m25020.00.pa	1.014	m30014.51.65	1.011	m30030.01.ps	1.022
b50240075.80	1.009	fk40140.1099	1.002	m25020.01.65	1.011	m30015.00.65	1.010	m30030.11.pa	1.017
b50400050.60	1.009	fk40160.1099	1.002	m25021.00.pa	1.014	m30015.00.pa	1.014	m30030.50.65	1.010
b55305050.60	1.009	fk40160.8080	1.002	m25022.00.pa	1.014	m30015.01.65	1.011	m30030.51.65	1.011
b60040025.60	1.009	fk40180.1099	1.002	m25023.00.pa	1.014	m30015.01.pa	1.016	m30031.00.pa	1.014

Art.No.	Seite/Page	Art.No.	Seite/Page	Art.No.	Seite/Page	Art.No.	Seite/Page	Art.No.	Seite/Page
m30031.11.pa	1.017	m30d26.01.pa	1.019	m40012.11.pa	1.017	m40030.00.65	1.010	m40d12.01.pa	1.019
m30032.00.pa	1.014	m30d27.01.pa	1.019	m40013.00.60	1.010	m40030.00.pa	1.014	m40d13.01.pa	1.019
m30032.01.65	1.011	m30d28.01.pa	1.019	m40013.00.pa	1.014	m40030.01.65	1.011	m40d14.01.pa	1.019
m30032.01.pa	1.016	m30d29.01.pa	1.019	m40013.01.pa	1.016	m40030.01.pa	1.016	m40d15.01.pa	1.019
m30032.11.pa	1.017	m30d30.01.pa	1.019	m40013.11.pa	1.017	m40030.01.ps	1.022	m40d16.01.pa	1.019
m30033.00.65	1.010	m30d31.01.pa	1.019	m40014.00.65	1.010	m40030.11.pa	1.017	m40d17.01.pa	1.019
m30033.00.pa	1.014	m30d32.01.pa	1.019	m40014.00.pa	1.014	m40031.11.pa	1.017	m40d18.01.pa	1.019
m30033.11.pa	1.017	m30d33.01.pa	1.019	m40014.01.65	1.011	m40032.00.pa	1.014	m40d19.01.pa	1.019
m30034.00.pa	1.014	m30d34.01.pa	1.019	m40014.01.pa	1.016	m40032.01.pa	1.016	m40d20.01.pa	1.019
m30034.01.pa	1.016	m30d35.01.pa	1.019	m40014.01.ps	1.022	m40032.01.ps	1.022	m40d21.01.pa	1.019
m30034.11.pa	1.017	m30d36.01.pa	1.019	m40014.11.pa	1.017	m40032.11.pa	1.017	m40d22.01.pa	1.019
m30035.00.65	1.010	m30e06.00.pa	1.018	m40015.00.60	1.010	m40033.11.pa	1.017	m40d23.01.pa	1.019
m30035.00.pa	1.014	m30e07.00.pa	1.018	m40015.00.65	1.010	m40034.00.pa	1.014	m40d24.01.pa	1.019
m30035.01.65	1.011	m30e08.00.pa	1.018	m40015.00.pa	1.014	m40034.01.pa	1.016	m40d25.01.pa	1.019
m30035.11.pa	1.017	m30e09.00.pa	1.018	m40015.01.65	1.011	m40034.11.pa	1.017	m40d26.01.pa	1.019
m30035.50.65	1.010	m30e10.00.pa	1.018	m40015.01.pa	1.016	m40035.00.65	1.010	m40d27.01.pa	1.019
m30035.51.65	1.011	m30e11.00.pa	1.018	m40015.01.ps	1.022	m40035.01.65	1.011	m40d28.01.pa	1.019
m30036.00.pa	1.014	m30e12.00.pa	1.018	m40015.11.pa	1.017	m40035.01.ps	1.022	m40d29.01.pa	1.019
m30036.01.pa	1.016	m30e13.00.pa	1.018	m40016.00.65	1.010	m40035.11.pa	1.017	m40d30.01.pa	1.019
m30036.11.pa	1.017	m30e14.00.pa	1.018	m40016.00.pa	1.014	m40036.00.pa	1.014	m40d31.01.pa	1.019
m30037.00.65	1.010	m30e15.00.pa	1.018	m40016.01.65	1.011	m40036.01.pa	1.016	m40d32.01.pa	1.019
m30037.00.pa	1.014	m30e16.00.pa	1.018	m40016.01.pa	1.016	m40036.11.pa	1.017	m40d33.01.pa	1.019
m30038.00.65	1.010	m30e17.00.pa	1.018	m40016.01.ps	1.022	m40038.00.pa	1.014	m40d34.01.pa	1.019
m30038.00.pa	1.014	m30e18.00.pa	1.018	m40016.11.pa	1.017	m40038.01.pa	1.016	m40d35.01.pa	1.019
m30038.01.pa	1.016	m30e19.00.pa	1.018	m40017.00.pa	1.014	m40038.01.ps	1.022	m40d36.01.pa	1.019
m30040.00.65	1.010	m30e20.00.pa	1.018	m40017.01.pa	1.016	m40040.00.65	1.010	m40e14.00.pa	1.018
m30040.00.pa	1.014	m30e21.00.pa	1.018	m40017.11.pa	1.017	m40040.00.pa	1.015	m40e18.00.pa	1.018
m30040.01.65	1.011	m30e22.00.pa	1.018	m40018.00.65	1.010	m40040.01.65	1.011	m50.0.ps	1.025
m30040.01.pa	1.016	m30e23.00.pa	1.018	m40018.00.pa	1.014	m40040.01.pa	1.016	m50.1.ps	1.025
m30040.01.ps	1.022	m30e24.00.pa	1.018	m40018.01.65	1.011	m40040.01.ps	1.022	m50008.00.65	1.010
m30040.50.65	1.010	m30e25.00.pa	1.018	m40018.01.pa	1.016	m40042.00.pa	1.015	m50010.00.65	1.010
m30040.51.65	1.011	m30e26.00.pa	1.018	m40018.01.ps	1.022	m40044.00.pa	1.015	m50010.01.65	1.011
m30041.01.pa	1.016	m30e27.00.pa	1.018	m40018.11.pa	1.017	m40045.00.65	1.010	m50012.00.65	1.010
m30042.00.pa	1.014	m30e28.00.pa	1.018	m40019.00.65	1.010	m40045.01.65	1.011	m50015.00.65	1.010
m30044.00.pa	1.014	m30e29.00.pa	1.018	m40019.00.pa	1.014	m40045.01.pa	1.016	m50015.01.65	1.011
m30045.00.65	1.010	m30e30.00.pa	1.018	m40019.01.pa	1.016	m40045.01.ps	1.022	m50015.01.ps	1.023
m30045.01.65	1.011	m30e31.00.pa	1.018	m40019.11.pa	1.017	m40046.00.pa	1.015	m50016.01.65	1.011
m30045.01.pa	1.016	m30e32.00.pa	1.018	m40020.00.65	1.010	m40048.00.pa	1.015	m50018.01.65	1.011
m30045.50.65	1.010	m30e33.00.pa	1.018	m40020.00.pa	1.014	m40050.00.65	1.010	m50020.00.65	1.010
m30045.51.65	1.011	m30e34.00.pa	1.018	m40020.01.65	1.011	m40050.00.pa	1.015	m50020.01.65	1.011
m30046.00.pa	1.014	m30e35.00.pa	1.018	m40020.01.pa	1.016	m40050.01.65	1.011	m50020.01.ps	1.023
m30048.00.pa	1.014	m30e36.00.pa	1.018	m40020.01.ps	1.022	m40050.01.pa	1.016	m50025.00.65	1.010
m30050.00.65	1.010	m30e37.00.pa	1.018	m40020.11.pa	1.017	m40050.01.ps	1.022	m50025.01.65	1.011
m30050.00.pa	1.014	m30e38.00.pa	1.018	m40021.00.65	1.010	m40055.00.65	1.010	m50025.01.ps	1.023
m30050.01.65	1.011	m30e39.00.pa	1.018	m40021.00.pa	1.014	m40055.00.pa	1.015	m50030.00.65	1.010
m30050.01.pa	1.016	m30e40.00.pa	1.018	m40021.01.pa	1.016	m40055.01.65	1.011	m50030.01.65	1.011
m30050.50.65	1.010	m30e41.00.pa	1.018	m40021.11.pa	1.017	m40055.01.pa	1.016	m50030.01.ps	1.023
m30050.51.65	1.011	m30e42.00.pa	1.018	m40022.00.pa	1.014	m40055.01.ps	1.022	m50035.00.65	1.010
m30055.00.65	1.010	m30e43.00.pa	1.018	m40022.01.65	1.011	m40056.01.ps	1.022	m50035.01.65	1.011
m30055.00.pa	1.014	m30e44.00.pa	1.018	m40022.01.pa	1.016	m40058.00.65	1.010	m50035.01.ps	1.023
m30055.01.ps	1.022	m30e45.00.pa	1.018	m40022.01.ps	1.022	m40060.00.65	1.010	m50040.00.65	1.010
m30055.50.65	1.010	m30e46.00.pa	1.018	m40022.11.pa	1.017	m40060.00.pa	1.015	m50040.01.65	1.011
m30060.00.65	1.010	m30e47.00.pa	1.018	m40023.00.pa	1.014	m40060.01.65	1.011	m50040.01.ps	1.023
m30060.00.pa	1.014	m30e48.00.pa	1.018	m40023.01.pa	1.016	m40060.01.pa	1.016	m50045.00.65	1.010
m30060.50.65	1.010	m30e49.00.pa	1.018	m40023.11.pa	1.017	m40060.01.ps	1.022	m50045.01.65	1.011
m30065.00.pa	1.014	m30e50.00.pa	1.018	m40024.00.pa	1.014	m40062.01.ps	1.022	m50045.01.ps	1.023
m30100.01.65	1.011	m40.0.ps	1.025	m40024.01.pa	1.016	m40065.00.pa	1.015	m50050.00.65	1.010
m30d05.01.pa	1.019	m40.1.ps	1.025	m40024.01.ps	1.022	m40065.01.pa	1.016	m50050.01.65	1.011
m30d06.01.pa	1.019	m40005.01.65	1.011	m40024.11.pa	1.017	m40065.01.ps	1.022	m50050.01.ps	1.023
m30d07.01.pa	1.019	m40005.11.pa	1.017	m40025.00.65	1.010	m40070.00.65	1.010	m50055.00.65	1.010
m30d08.01.pa	1.019	m40006.11.pa	1.017	m40025.00.pa	1.014	m40070.01.65	1.011	m50055.01.65	1.011
m30d09.01.pa	1.019	m40007.11.pa	1.017	m40025.01.65	1.011	m40070.01.ps	1.022	m50055.01.ps	1.023
m30d10.01.pa	1.019	m40008.11.pa	1.017	m40025.01.pa	1.016	m40075.01.ps	1.022	m50060.00.65	1.010
m30d11.01.pa	1.019	m40009.11.pa	1.017	m40025.01.ps	1.022	m40080.00.65	1.010	m50060.01.65	1.011
m30d12.01.pa	1.019	m40010.00.65	1.010	m40025.11.pa	1.017	m40080.01.65	1.011	m50060.01.ps	1.023
m30d13.01.pa	1.019	m40010.00.pa	1.014	m40026.00.pa	1.014	m40080.01.ps	1.022	m50065.01.65	1.010
m30d14.01.pa	1.019	m40010.01.65	1.011	m40026.01.pa	1.016	m40085.01.ps	1.022	m50070.00.65	1.010
m30d15.01.pa	1.019	m40010.01.pa	1.016	m40026.11.pa	1.017	m40090.00.65	1.010	m50070.01.65	1.011
m30d16.01.pa	1.019	m40010.01.ps	1.022	m40027.00.pa	1.014	m40090.01.ps	1.022	m50070.01.ps	1.023
m30d17.01.pa	1.019	m40010.11.pa	1.017	m40027.01.pa	1.016	m40095.00.65	1.010	m50075.01.65	1.023
m30d18.01.pa	1.019	m40011.00.pa	1.014	m40027.11.pa	1.017	m40100.01.65	1.011	m50080.00.65	1.010
m30d19.01.pa	1.019	m40011.01.pa	1.016	m40028.00.pa	1.014	m40d05.01.pa	1.019	m50080.01.65	1.011
m30d20.01.pa	1.019	m40011.11.pa	1.017	m40028.01.pa	1.016	m40d06.01.pa	1.019	m50080.01.ps	1.023
m30d21.01.pa	1.019	m40012.00.65	1.010	m40028.01.ps	1.022	m40d07.01.pa	1.019	m50085.01.ps	1.023
m30d22.01.pa	1.019	m40012.00.pa	1.014	m40028.11.pa	1.017	m40d08.01.pa	1.019	m50090.00.65	1.010
m30d23.01.pa	1.019	m40012.01.65	1.011	m40029.00.pa	1.014	m40d09.01.pa	1.019	m50090.01.65	1.011
m30d24.01.pa	1.019	m40012.01.pa	1.016	m40029.01.pa	1.016	m40d10.01.pa	1.019	m50090.01.ps	1.023
m30d25.01.pa	1.019	m40012.01.ps	1.022	m40029.11.pa	1.017	m40d11.01.pa	1.019	m50100.00.65	1.010

Art.No.	Seite/Page	Art.No.	Seite/Page	Art.No.	Seite/Page	Art.No.	Seite/Page	Art.No.	Seite/Page
m50100.01.65	1.011	m60120.01.99	1.013	p024050050pr	1.042	p032080100hp	1.040	p042150050hp	1.041
m50100.01.ps	1.023	m60120.01.ps	1.023	p025050030hp	1.040	p032080100pa	1.041	p04306505060	1.041
m50110.01.ps	1.023	m60120.11.ps	1.024	p02505004060	1.041	p032080100pr	1.042	p04307505060	1.041
m50120.01.ps	1.023	m60120.51.99	1.013	p02505005060	1.041	p03208012090	1.043	p04308001550	1.040
m60.0.ps	1.025	m60130.01.99	1.013	p025050050hp	1.040	p03208015090	1.043	p04308005060	1.041
m60.1.ps	1.025	m60130.51.99	1.013	p025050050pa	1.041	p032080150pr	1.042	p043080050hp	1.041
m60.10.ps	1.025	m60140.01.99	1.013	p025050050pr	1.042	p032080300pa	1.041	p04310002050	1.040
m60010.01.99	1.013	m60140.11.ps	1.024	p02506005060	1.041	p03209005090	1.043	p04310004050	1.040
m60010.51.99	1.013	m60140.51.99	1.013	p02506005090	1.042	p032090050hp	1.040	p04312010060	1.041
m60015.00.99	1.013	m60150.01.99	1.013	p025080080pr	1.042	p03209010090	1.043	p045080030hp	1.041
m60015.01.99	1.013	m60150.51.99	1.013	p02706005090	1.043	p03210008090	1.043	p045080030pa	1.042
m60015.01.ps	1.023	m60160.01.99	1.013	p028045050hp	1.040	p03210010080	1.042	p04508005060	1.042
m60015.51.99	1.013	m60160.51.99	1.013	p028045050pr	1.042	p03210010090	1.043	p04607006090	1.043
m60018.01.99	1.013	m60180.11.ps	1.024	p028045050tf	1.043	p032100100hp	1.040	p048120080pr	1.042
m60020.00.99	1.013	ot08020	4.029	p028045050tf	1.043	p032100200hp	1.040	p048120100hp	1.041
m60020.01.99	1.013	ot10015	4.029	p02805005060	1.041	p03212010060	1.041	p05011010090	1.043
m60020.01.ps	1.023	ot12020	4.029	p028050050hp	1.040	p032120100hp	1.040	p050110200pv	1.042
m60020.51.99	1.013	ot15015	4.029	p028055030pr	1.042	p032138200hp	1.040	p05110001020	1.040
m60025.00.99	1.013	ot17020	4.029	p02805505060	1.041	p032300150hp	1.040	p05208000550	1.040
m60025.01.99	1.013	ot18020	4.029	p02805505090	1.043	p033080100hp	1.040	p05208001050	1.040
m60025.01.ps	1.023	ot20020	4.029	p028055050hp	1.040	p035070050pr	1.042	p05208007060	1.041
m60025.51.99	1.013	ot22020	4.029	p028055050pr	1.042	p03605802050	1.040	p05308001080	1.042
m60030.01.99	1.013	ot25020	4.029	p02805603060	1.041	p03605803050	1.040	p05308002050	1.040
m60030.01.ps	1.023	ot30020	4.029	p028060080hp	1.040	p03606001050	1.040	p05308002080	1.042
m60030.51.99	1.013	ot30030	4.029	p028060100hp	1.040	p03606002050	1.040	p05308002090	1.043
m60035.01.99	1.013	ot30050	4.029	p028065050pr	1.042	p03606003050	1.040	p05308005060	1.041
m60035.01.ps	1.023	ot32020	4.029	p02806520090	1.043	p03706005060	1.041	p05308005090	1.043
m60035.51.99	1.013	ot35030	4.029	p02807004090	1.043	p03706005090	1.043	p053080050pa	1.042
m60040.01.99	1.013	ot40025	4.029	p02807005060	1.041	p03707005060	1.041	p053080050pr	1.042
m60040.01.ps	1.023	ot40030	4.029	p02807005090	1.043	p03707005090	1.043	p05308006040	1.041
m60040.51.99	1.013	ot40040	4.029	p028070050pr	1.042	p037070080hp	1.040	p05308008060	1.041
m60045.01.99	1.013	ot50025	4.029	p028080050hp	1.040	p037070080pr	1.042	p053080100pr	1.042
m60045.01.ps	1.023	ot50050	4.029	p02908003050	1.040	p03708005060	1.041	p05309005060	1.041
m60045.11.ps	1.024	ot50075	4.029	p030050010tf	1.043	p03708005090	1.043	p05310005060	1.041
m60045.51.99	1.013	ot60025	4.029	p030050050tf	1.043	p037090080hp	1.040	p05310005090	1.043
m60048.01.99	1.013	ot60050	4.029	p03005010060	1.041	p040060150hp	1.040	p05310008060	1.041
m60048.51.99	1.013	ot70050	4.029	p03105003080	1.042	p04107003050	1.040	p05310008090	1.043
m60050.01.99	1.013	ot80050	4.029	p03205005060	1.041	p04107007090	1.043	p05310010090	1.043
m60050.01.ps	1.023	ot80100	4.029	p03205005090	1.043	p04111010080	1.042	p05311005090	1.043
m60050.11.ps	1.024	ot90030	4.029	p032050050pr	1.042	p04111010090	1.043	p053110050pr	1.042
m60050.51.99	1.013	p012030030pr	1.042	p03205501050	1.040	p04116005050	1.040	p05311010090	1.043
m60055.01.99	1.013	p012048080hp	1.040	p03205505060	1.041	p042055050hp	1.040	p05312005060	1.041
m60055.01.ps	1.023	p013025030hp	1.040	p03205603090	1.043	p042060020hp	1.040	p05312005090	1.043
m60055.51.99	1.013	p01502504060	1.041	p03206001050	1.040	p04206005060	1.041	p053120050hp	1.041
m60060.01.99	1.013	p01502508060	1.041	p03206001060	1.041	p04206005090	1.043	p05312008060	1.041
m60060.01.ps	1.023	p01503003060	1.041	p03206002050	1.040	p042060100hp	1.040	p05312010090	1.043
m60060.11.ps	1.024	p015030030hp	1.040	p032060020hp	1.040	p04206405060	1.041	p053120100pr	1.042
m60060.51.99	1.013	p015030050pr	1.042	p03206003060	1.041	p04207001050	1.040	p053200150hp	1.041
m60065.01.99	1.013	p01504505060	1.041	p03206005060	1.041	p042070020hp	1.040	p055160040pa	1.042
m60065.01.ps	1.023	p01602302020	1.040	p03206005080	1.042	p04207005060	1.041	p055190100pa	1.042
m60065.51.99	1.013	p016060030hp	1.040	p03206005090	1.043	p04207005090	1.043	p05608004080	1.042
m60070.01.99	1.013	p016060050pr	1.042	p032060050hp	1.040	p042070050pv	1.042	p05611002060	1.041
m60070.01.ps	1.023	p018030050pr	1.042	p032060050pr	1.042	p04207012060	1.041	p056110030hp	1.041
m60070.11.ps	1.024	p01804003060	1.041	p03206008060	1.041	p04208001080	1.042	p060110050hp	1.041
m60070.51.99	1.013	p01804003090	1.042	p03206008090	1.043	p04208002050	1.040	p060110120hp	1.041
m60075.01.99	1.013	p018040050pr	1.042	p032060080pa	1.041	p04208005060	1.041	p060110150hp	1.041
m60075.01.ps	1.023	p01804503060	1.041	p032060080pr	1.042	p04208005090	1.043	p060160100tf	1.043
m60075.51.99	1.013	p01804503090	1.042	p03206010060	1.041	p042080050pr	1.042	p06016905060	1.041
m60080.01.99	1.013	p018045050pr	1.042	p032060100hp	1.040	p04208008060	1.041	p061085020hp	1.041
m60080.01.ps	1.023	p01805505060	1.041	p03206015010	1.040	p04208008090	1.043	p06108802050	1.040
m60080.51.99	1.013	p02104005060	1.041	p032060150hp	1.040	p04208010080	1.042	p06108803060	1.041
m60085.01.99	1.013	p02105005090	1.042	p032060150pr	1.042	p042080100pr	1.042	p06108805060	1.041
m60085.01.ps	1.023	p02106504060	1.041	p03207001050	1.040	p04208012090	1.043	p06108808060	1.041
m60085.11.ps	1.024	p022040050pr	1.042	p03207004010	1.040	p04209005090	1.043	p061195050hp	1.041
m60085.51.99	1.013	p02204505060	1.041	p03207005010	1.040	p04209006060	1.041	p06210000550	1.040
m60090.01.99	1.013	p02204505090	1.042	p03207005060	1.041	p04209008090	1.043	p06210001050	1.040
m60090.01.ps	1.023	p022045050hp	1.040	p03207005090	1.043	p042090080hp	1.041	p06210003090	1.043
m60090.51.99	1.013	p02204803060	1.041	p03207006010	1.040	p042100025pa	1.042	p06210005010	1.040
m60095.01.99	1.013	p02205001050	1.040	p032070100pr	1.042	p04210005060	1.041	p06210005060	1.041
m60095.51.99	1.013	p02205002020	1.040	p03207015010	1.040	p04210005090	1.043	p062100050hp	1.041
m60100.01.99	1.013	p022050030hp	1.040	p03207015090	1.043	p042100050pr	1.042	p062110050hp	1.041
m60100.01.ps	1.023	p022050050hp	1.040	p032070200pr	1.042	p04210008010	1.040	p06212002080	1.042
m60100.11.ps	1.024	p02205505060	1.041	p03208001060	1.041	p04210008060	1.041	p06212010090	1.043
m60100.51.99	1.013	p02205505090	1.042	p03208002060	1.041	p04210008090	1.043	p062200100tf	1.043
m60110.01.99	1.013	p02205510060	1.041	p03208003060	1.041	p042100080hp	1.041	p06308005090	1.043
m60110.01.ps	1.023	p022055100hp	1.040	p03208005060	1.041	p042100100hp	1.041	p06309005060	1.041
m60110.11.ps	1.024	p022060050pa	1.041	p03208005090	1.043	p042100100pr	1.042	p06309005090	1.043
m60110.51.99	1.013	p02210003060	1.041	p032080050pr	1.042	p04214015090	1.043	p063090050hp	1.041

Art.No.	Seite/Page	Art.No.	Seite/Page	Art.No.	Seite/Page	Art.No.	Seite/Page	Art.No.	Seite/Page
p06309008060	1.041	u10060252060	2.055	u50170305060	2.055	v32145253060	2.056	x08005045.ps	1.032
p063100060pr	1.042	u10060302060	2.055	u50340305060	2.055	v40105504060	2.056	x08006045.ps	1.032
p06312005060	1.041	u10060452060	2.055	u55090305060	2.055	v40145254060	2.056	x08007045.ps	1.032
p063120050pr	1.042	u10095202060	2.055	u55120305060	2.055	v40180504060	2.056	x08008045.pc	1.032
p063130100hp	1.041	u10110252060	2.055	u55125305060	2.055	v40190665460	2.056	x08008045.ps	1.032
p06314015060	1.041	u10130252060	2.055	u55220305060	2.055	v40200030360	2.056	x08009045.ps	1.032
p06408001050	1.040	u10180202060	2.055	u60100305060	2.055	v40200030560	2.056	x08010045.pa	1.032
p06410008090	1.043	u10250302060	2.055	u80150405060	2.055	v40200040360	2.056	x08010045.ps	1.032
p064110160pr	1.042	u12036202560	2.055	ut08020	4.029	v40200252360	2.056	x08010045.ps	1.032
p064120100pr	1.042	u12052152060	2.055	ut10015	4.029	v40305503060	2.056	x08011045.ps	1.032
p06414010090	1.043	u12065252560	2.055	ut12020	4.029	w15045202060	2.054	x08012045.ps	1.032
p06414015099	1.043	u12085402060	2.055	ut14020	4.029	w20550303060	2.054	x08013045.ps	1.032
p065120050pa	1.042	u13060302560	2.055	ut15015	4.029	x05002027.pa	1.032	x08014045.ps	1.032
p065120100pa	1.042	u13075252560	2.055	ut18020	4.029	x05003027.pa	1.032	x08015042.paw	1.032
p070140140hp	1.041	u13100302560	2.055	ut20020	4.029	x05005027.pa	1.032	x08015045.pa	1.032
p070140150pr	1.042	u13130252560	2.055	ut22020	4.029	x05007527.pa	1.032	x08015045.ps	1.032
p07212003090	1.043	u13135402560	2.055	ut25025	4.029	x05010027.pa	1.032	x08015045.ps	1.033
p07212005060	1.041	u13160252060	2.055	ut30020	4.029	x05010032.ps	1.032	x08020042.paw	1.033
p080110020hp	1.041	u13190302060	2.055	ut30030	4.029	x05013527.pa	1.032	x08020045.pa	1.033
p080110030hp	1.041	u13200402560	2.055	ut30050	4.029	x05015027.pa	1.032	x08020045.pc	1.033
p08011010090	1.043	u13210302060	2.055	ut35030	4.029	x05020027.pa	1.032	x08020045.ps	1.033
p08011510060	1.041	u13240302060	2.055	ut40030	4.029	x06003032.pa	1.032	x08025045.pc	1.033
p08011515060	1.041	u13310302060	2.055	ut50025	4.029	x06004532.pa	1.032	x08025045.ps	1.033
p08012010060	1.041	u14230302560	2.055	ut50050	4.029	x06005032.pa	1.032	x08030045.pa	1.033
p08013802050	1.040	u15050252060	2.055	ut50075	4.029	x06005632.pa	1.032	x08030045.pc	1.033
p08014008090	1.043	u15050272060	2.055	ut60025	4.029	x06006432.pa	1.032	x08030045.ps	1.033
p080180050hp	1.041	u15060302560	2.055	ut60050	4.029	x06007032.pa	1.032	x08035045.pc	1.033
p08110805090	1.043	u15140303060	2.055	ut80050	4.029	x06007432.pa	1.032	x08035045.ps	1.033
p08112002090	1.043	u15150303060	2.055	ut90030	4.029	x06008032.pa	1.032	x100025550pc	1.033
p082150100pr	1.042	u15175253060	2.055	v10040452060	2.056	x06009232.pa	1.032	x10003055.pc	1.033
p08216005010	1.040	u15190162560	2.055	v10045102060	2.056	x06010032.pa	1.032	x10003055.ps	1.033
p09011505090	1.043	u15210203060	2.055	v10050102060	2.056	x06015032.pa	1.032	x10004018090	1.030
p090120030pr	1.042	u15240203060	2.055	v10060252060	2.056	x06020032.pa	1.032	x10005018090	1.030
p090180150hp	1.041	u15240303060	2.055	v10060302060	2.056	x06030032.pa	1.032	x10005052.pa	1.033
p092116030pr	1.042	u15320252060	2.055	v10080152060	2.056	x07002036.pc	1.032	x10005052.paw	1.033
p09213016090	1.043	u16100252560	2.055	v10080252060	2.056	x07003036.pc	1.032	x10005055.pc	1.033
p09213020090	1.043	u16290252060	2.055	v10080302060	2.056	x07003036.ps	1.032	x10005055.ps	1.033
p09512005090	1.043	u17045252060	2.055	v10095102060	2.056	x07004036.ps	1.032	x10005062.pa	1.033
p100140020hp	1.041	u17054252060	2.055	v10095202060	2.056	x07005036.pc	1.032	x10005062.ps	1.033
p10015005090	1.043	u17070252060	2.055	v10098572060	2.056	x07005036.ps	1.032	x10006008090	1.030
p10021010090	1.043	u17180302560	2.055	v10110252060	2.056	x07006036.pc	1.032	x10006018090	1.030
p100210100pr	1.042	u17336302560	2.055	v10140102060	2.056	x07006036.ps	1.032	x10007018090	1.030
p105210080hp	1.041	u18050153060	2.055	v10150202060	2.056	x07006536.ps	1.032	x10008018090	1.030
p10522005060	1.041	u18070252060	2.055	v10165252060	2.056	x07007036.pc	1.032	x10009018090	1.030
p105220080hp	1.041	u19070302060	2.055	v10180202060	2.056	x07007036.ps	1.032	x10010018090	1.030
p12017005080	1.042	u20070303060	2.055	v10180602060	2.056	x07008036.pc	1.032	x10010052.pa	1.033
p12317605050	1.040	u20095252060	2.055	v12090202060	2.056	x07008036.ps	1.032	x10010055.pc	1.033
p12423005060	1.041	u20095252560	2.055	v15075282060	2.056	x07009036.ps	1.032	x10010055.ps	1.033
p12423010060	1.041	u20120302560	2.055	v15075282160	2.056	x07010036.pc	1.032	x10010062.pa	1.033
p12425008050	1.040	u20160302560	2.055	v15080152060	2.056	x07010036.ps	1.032	x10010062.ps	1.033
p125190100hp	1.041	u20200253060	2.055	v15090272060	2.056	x07010041.pc	1.032	x1001018090	1.030
p125190100pr	1.042	u20200302560	2.055	v15095152060	2.056	x07011036.ps	1.032	x10012018090	1.030
p128200050hp	1.041	u20470303060	2.055	v15120272060	2.056	x07012036.ps	1.032	x10013018090	1.030
p13021003090	1.043	u24120202560	2.055	v15150303060	2.056	x07013036.ps	1.032	x10015018090	1.030
p13021005090	1.043	u25030252540	2.055	v16076222060	2.056	x07014036.ps	1.032	x10015055.pc	1.033
p13724005080	1.042	u25055252540	2.055	v16100252560	2.056	x07015036.pc	1.032	x10015055.ps	1.033
p142248100pr	1.042	u25080403060	2.055	v20050202560	2.056	x07015036.ps	1.032	x10015062.ps	1.033
p15028010050	1.040	u25110252560	2.055	v20090203060	2.056	x07016036.ps	1.032	x10020052.pa	1.033
p15318003050	1.040	u25110322560	2.055	v20095252060	2.056	x07017036.ps	1.032	x10020055.pc	1.033
p16028015080	1.042	u25110402560	2.055	v20110353060	2.056	x07018036.pc	1.032	x10020055.ps	1.033
p16525008090	1.043	u25180252560	2.055	v20120803060	2.056	x07018036.ps	1.032	x10020062.pa	1.033
p18024020090	1.043	u25180322560	2.055	v23112423060	2.056	x07018536.pc	1.032	x10020062.ps	1.033
p32137015090	1.043	u25180402560	2.055	v23112423160	2.056	x07019036.ps	1.032	x10024018090	1.030
s15100072060	2.058	u30055203060	2.055	v23511902560	2.056	x07020036.pc	1.032	x10025055.pc	1.033
s22130132560	2.058	u30055303060	2.055	v23514953060	2.056	x07020036.ps	1.032	x10025055.ps	1.033
s28170143060	2.058	u30064273060	2.055	v24080403060	2.056	x07025036.pc	1.032	x10025062.ps	1.033
s30130165060	2.058	u30090303060	2.055	v24100303060	2.056	x07025036.ps	1.032	x10028018090	1.030
s50100205060	2.058	u30140253060	2.055	v24110403060	2.056	x07027036.ps	1.032	x10030018090	1.030
s60100255060	2.058	u30210403060	2.055	v24110523060	2.056	x07028836.pc	1.032	x10030052.pa	1.033
t10060301060	2.058	u30258803060	2.055	v24120202560	2.056	x07030036.pc	1.032	x10030055.pc	1.033
t15075401760	2.058	u40036403060	2.055	v24120202660	2.056	x07030036.ps	1.032	x10030055.ps	1.033
t15150401760	2.058	u40063173060	2.055	v24137253060	2.056	x07035036.pc	1.032	x10030062.pa	1.033
t40095374960	2.058	u40080304060	2.055	v24140202560	2.056	x07035036.ps	1.032	x10030062.ps	1.033
t40105384960	2.058	u40095304060	2.055	v25041352560	2.056	x08003045.pc	1.032	x10035018090	1.030
u10025222060	2.055	u40170302560	2.055	v25112423060	2.056	x08003045.ps	1.032	x10035055.pc	1.033
u10045202060	2.055	u47195553060	2.055	v25170233060	2.056	x08004045.ps	1.032	x10035055.ps	1.033
u10050102060	2.055	u50100303060	2.055	v28200454060	2.056	x08005045.pa	1.032	x10035062.pa	1.033
u10060202060	2.055	u50140305060	2.055	v30200303060	2.056	x08005045.pc	1.032	x10045018090	1.030

Art.No.	Seite/Page	Art.No.	Seite/Page	Art.No.	Seite/Page	Art.No.	Seite/Page	Art.No.	Seite/Page
x10057020.60	1.031	x25030025.60	1.031	x40040040.10	1.028	x45060045.40	1.026	x50100075.10	1.028
x10113504540	1.027	x25030025.90	1.031	x40040050.10	1.028	x45060090.10	1.028	x50100075.60	1.028
x10113504940	1.027	x25050020.60	1.031	x40040050.60	1.028	x45065090.10	1.028	x50100075.90	1.028
x10200020.60	1.026	x25050025.60	1.031	x40040054.40	1.026	x45070030.60	1.026	x50105034.40	1.026
x10309504560	1.027	x25050025.90	1.031	x40040080.10	1.028	x45070045.40	1.026	x50105040.40	1.026
x10617506340	1.027	x25050030.60	1.031	x40045054.40	1.026	x45070090.10	1.028	x50110050.40	1.026
x10623006340	1.027	x25065020.60	1.031	x40045074.40	1.026	x45073090.10	1.028	x50110075.10	1.028
x11007005160	1.027	x25080020.60	1.031	x40050075.60	1.028	x45080090.10	1.028	x50110075.60	1.028
x11015305040	1.027	x25090040.60	1.031	x40050080.10	1.028	x45085025.60	1.031	x50110075.90	1.028
x11020015.60	1.031	x25100025.80	1.031	x40053080.10	1.028	x45090047.40	1.026	x50115075.10	1.028
x11025005040	1.027	x25120020.60	1.031	x40055034.40	1.026	x45090050.40	1.026	x50120050.60	1.031
x11509005040	1.027	x25160040.60	1.031	x40055070.40	1.026	x45090050.60	1.026	x50120075.10	1.028
x12006007090	1.030	x25180040.60	1.031	x40055074.40	1.026	x45090090.10	1.028	x50120075.60	1.028
x12007005160	1.027	x25300050.40	1.031	x40055080.10	1.028	x45100090.10	1.028	x50120075.90	1.028
x12007104560	1.027	x28040020.60	1.028	x40060054.40	1.026	x45105090.10	1.028	x50130075.10	1.028
x12012018090	1.030	x30020030.10	1.028	x40060080.10	1.028	x45107047.40	1.026	x50130075.90	1.028
x12014018090	1.030	x30021040.60	1.028	x40063040.40	1.026	x45110090.10	1.028	x50140050.10	1.029
x12030020.60	1.031	x30025030.60	1.028	x40070034.40	1.026	x45120050.40	1.026	x50140075.10	1.028
x12080020.60	1.031	x30030030.60	1.028	x40070035.40	1.026	x45120090.10	1.028	x50140075.90	1.028
x12100020.60	1.031	x30030030.90	1.028	x40070046.40	1.026	x45135090.10	1.028	x50150075.10	1.028
x12215506540	1.027	x30030050.10	1.028	x40070054.40	1.026	x45140090.10	1.028	x50160075.10	1.028
x12315504540	1.027	x30040030.10	1.028	x40070055.40	1.026	x45150090.10	1.028	x50160075.90	1.028
x12325005040	1.027	x30040070.40	1.031	x40070070.40	1.026	x45160090.10	1.028	x50170050.40	1.031
x12415504960	1.027	x30050030.10	1.028	x40070074.40	1.026	x45200090.10	1.028	x50170075.10	1.028
x12515507140	1.027	x30050040.60	1.028	x40070080.10	1.028	x46063036.60	1.026	x50170075.90	1.028
x12515509040	1.027	x30050050.60	1.028	x40080030.60	1.031	x46090050.40	1.026	x50180075.10	1.028
x13035012.40	1.031	x30060025.60	1.031	x40080040.10	1.028	x47090038.40	1.026	x50180075.90	1.028
x13095012.40	1.031	x30060030.60	1.028	x40080080.10	1.028	x48030050.60	1.028	x50200075.10	1.029
x13120012.40	1.031	x30070025.60	1.031	x40082046.40	1.026	x48060040.60	1.029	x50220040.40	1.031
x14040020.60	1.031	x30070030.90	1.028	x40090035.40	1.026	x50020075.10	1.028	x50220075.10	1.029
x14060015.40	1.031	x30082070.40	1.031	x40090050.60	1.028	x50020075.60	1.028	x50230075.10	1.029
x14060020.60	1.031	x30100030.60	1.031	x40090080.10	1.028	x50020075.90	1.028	x50230075.60	1.029
x14080020.60	1.031	x30130050.60	1.028	x40100030.60	1.031	x50022075.10	1.028	x50240075.10	1.029
x14100020.60	1.031	x30130050.90	1.028	x40100034.40	1.026	x50025075.10	1.028	x50240075.90	1.029
x14522006740	1.027	x30170030.40	1.026	x40100046.40	1.026	x50025075.90	1.028	x50250075.10	1.029
x15006008090	1.030	x30200030.90	1.028	x40100054.40	1.026	x50030035.60	1.029	x50260050.10	1.029
x15020025.60	1.031	x30200050.90	1.028	x40100073.40	1.026	x50030075.10	1.028	x50265075.10	1.029
x15030025.60	1.031	x30515050.60	1.031	x40100080.10	1.028	x50030075.60	1.028	x50300035.10	1.029
x15040025.60	1.031	x32029030.40	1.026	x40120005440	1.031	x50030075.90	1.028	x50300050.90	1.029
x15050025.60	1.031	x32048049.40	1.026	x40120025.60	1.031	x50035075.10	1.028	x50300075.10	1.029
x15060020.60	1.031	x32070050.40	1.026	x40120030.60	1.031	x50037075.10	1.028	x50350075.10	1.029
x15070020.60	1.031	x32078034.40	1.026	x40120040.10	1.028	x50040045.60	1.029	x50400075.10	1.029
x15100020.60	1.031	x32078049.40	1.026	x40120040.60	1.028	x50040050.60	1.029	x50430075.10	1.029
x15120025.60	1.031	x32090050.40	1.026	x40120050.60	1.028	x50040075.10	1.028	x50500075.10	1.029
x16030015.60	1.031	x32095031.40	1.026	x40120080.10	1.028	x50040075.90	1.028	x51090042.40	1.026
x16050010.60	1.031	x32120030.40	1.026	x40128036.60	1.026	x50040090.60	1.028	x51090048.40	1.026
x16220010.60	1.031	x32120050.40	1.026	x40130037.40	1.026	x50041075.60	1.028	x51100042.40	1.026
x16240010.60	1.031	x35120025.60	1.031	x40130054.40	1.026	x50045075.60	1.028	x51110042.40	1.026
x16501012560	1.031	x35145025.60	1.031	x40150080.10	1.028	x50045100.90	1.028	x51120050.40	1.026
x17030020.40	1.031	x36030026.40	1.026	x40160025.90	1.031	x50050075.10	1.028	x52030020.60	1.031
x17030025.40	1.031	x36055033.40	1.026	x40160080.10	1.028	x50050075.60	1.028	x52063035.60	1.026
x17040020.40	1.031	x36070033.40	1.026	x40170005440	1.031	x50050075.90	1.028	x52090052.40	1.026
x17050020.60	1.031	x36090033.40	1.026	x40170046.40	1.031	x5005100.60	1.028	x52090066.40	1.026
x17080020.60	1.031	x36095026.40	1.026	x40186050.60	1.028	x50055035.60	1.031	x52250020.60	1.031
x19015020.60	1.031	x36100033.40	1.026	x40200080.10	1.028	x50055075.10	1.028	x53090047.40	1.026
x19050020.60	1.031	x37040025.80	1.031	x40280040.60	1.028	x50060050.10	1.029	x53090055.40	1.026
x20015040.60	1.031	x38050033.40	1.026	x40300080.10	1.028	x50060075.10	1.028	x53105039.40	1.026
x20030030.90	1.031	x38052030.60	1.026	x42070029.40	1.026	x50060075.90	1.028	x54100042.40	1.026
x20050025.60	1.031	x38063030.60	1.026	x42070032.40	1.026	x50064075.60	1.028	x54102037.40	1.026
x20060050.60	1.031	x38078031.40	1.026	x42090047.40	1.026	x50065075.10	1.028	x54102050.40	1.026
x20070020.60	1.031	x38080030.40	1.026	x42100030.40	1.026	x50070042.40	1.026	x55010110.10	1.029
x20070030.60	1.031	x38080030.60	1.031	x43078035.40	1.026	x50070075.10	1.028	x55015110.10	1.029
x20080040.60	1.031	x38080033.40	1.026	x43090035.40	1.026	x50070075.60	1.028	x55020110.10	1.029
x20090040.60	1.031	x38090031.40	1.026	x43105035.40	1.026	x50072075.10	1.028	x55025110.10	1.029
x20090050.60	1.031	x38090033.40	1.026	x43110046.40	1.026	x50080075.10	1.028	x55030025.60	1.031
x20095050.60	1.031	x38090047.40	1.026	x44063048.60	1.026	x50080075.60	1.028	x55030110.10	1.029
x20125050.60	1.031	x38100028.40	1.026	x44090020.40	1.026	x50080075.90	1.028	x55035110.10	1.029
x20150025.90	1.031	x38110043.40	1.026	x45020090.10	1.028	x50085075.60	1.028	x55040110.10	1.029
x20200050.60	1.031	x39080020.40	1.026	x45022090.10	1.028	x50090025.60	1.026	x55042110.10	1.029
x20340040.60	1.031	x39090029.40	1.026	x45025090.10	1.028	x50090042.40	1.026	x55045110.10	1.029
x20480050.60	1.031	x39128041.60	1.026	x45030050.60	1.028	x50090075.10	1.028	x55046110.10	1.029
x21035030.40	1.026	x40010080.10	1.028	x45030090.10	1.028	x50090075.90	1.028	x55047110.10	1.029
x22050020.60	1.031	x40019050.60	1.028	x45035090.10	1.028	x50093075.60	1.028	x55050110.10	1.029
x22100020.60	1.031	x40020080.10	1.028	x45040090.10	1.028	x50094075.60	1.028	x55053110.10	1.029
x23330025.60	1.031	x40025075.60	1.028	x45044090.10	1.028	x50095075.10	1.028	x55055110.10	1.029
x24170040.60	1.031	x40030030.60	1.031	x45045090.10	1.028	x50096075.60	1.028	x55057110.10	1.029
x25020020.60	1.031	x40030050.60	1.028	x45050090.10	1.028	x50100042.40	1.026	x55060110.10	1.029
x25030020.60	1.031	x40030080.10	1.028	x45050090.90	1.028	x50100050.10	1.029	x55064110.10	1.029

Art.No.	Seite/Page	Art.No.	Seite/Page	Art.No.	Seite/Page	Art.No.	Seite/Page
x55065110.10	1.029	x60070090.10	1.029	x64135050.40	1.026	x80060140.10	1.030
x55066110.10	1.029	x60080075.90	1.029	x65030075.10	1.030	x80065100.10	1.030
x55070110.10	1.029	x60080090.10	1.029	x65040054.40	1.026	x80065120.90	1.030
x55073025.60	1.031	x60090034.40	1.026	x65060054.40	1.026	x80070120.90	1.030
x55075110.10	1.029	x60090075.90	1.029	x65065040.40	1.026	x80070140.10	1.030
x55080025.60	1.031	x60090090.10	1.029	x65065054.40	1.026	x80080050.60	1.030
x55080110.10	1.029	x60100075.90	1.029	x65100054.40	1.026	x80080120.90	1.030
x55086110.10	1.029	x60100090.10	1.029	x65135041.40	1.026	x80080140.10	1.030
x55090110.10	1.029	x60110075.90	1.029	x65135054.40	1.026	x80090120.90	1.030
x55095110.10	1.029	x60110090.10	1.029	x65160054.40	1.027	x80090140.10	1.030
x55100110.10	1.029	x60110100.60	1.029	x6613503760	1.027	x80095140.10	1.030
x55105110.10	1.029	x60117090.10	1.029	x66135042.40	1.027	x80100120.90	1.030
x55107110.10	1.029	x60120050.60	1.030	x69045145.60	1.031	x80100140.10	1.030
x55110110.10	1.029	x60120075.60	1.029	x70020100.10	1.030	x80120050.40	1.027
x55115110.10	1.029	x60120075.90	1.029	x70020135.10	1.029	x80120120.90	1.030
x55116110.10	1.029	x60120090.10	1.029	x70025025.40	1.027	x80120140.10	1.030
x55120110.10	1.029	x60127050.60	1.030	x70025135.10	1.029	x80130100.10	1.030
x55125110.10	1.029	x60130075.90	1.029	x70030140.10	1.029	x80130120.90	1.030
x55130025.60	1.026	x60140075.90	1.029	x70035135.10	1.029	x80140120.90	1.030
x55130110.10	1.029	x60140090.10	1.029	x70040100.10	1.030	x80140140.10	1.030
x55135110.10	1.029	x60150025.60	1.031	x70040140.10	1.029	x80150110.90	1.030
x55140110.10	1.029	x60150075.90	1.029	x70050100.10	1.030	x80150120.90	1.030
x55150110.10	1.029	x60150090.10	1.029	x70050100.60	1.030	x80150140.10	1.030
x55160110.10	1.029	x60155048.60	1.030	x70050140.10	1.029	x80160120.90	1.030
x55180110.10	1.029	x60155100.60	1.029	x70052135.10	1.029	x80160140.10	1.030
x55190110.10	1.029	x60160075.90	1.029	x70060140.10	1.029	x80170100.90	1.030
x55200110.10	1.029	x60160090.10	1.029	x70070140.10	1.029	x80170120.90	1.030
x55220110.10	1.029	x60170090.10	1.029	x70072140.10	1.029	x80180120.90	1.030
x55240110.10	1.029	x60180039.40	1.026	x70075050.60	1.030	x80180140.10	1.030
x55250110.10	1.029	x60180075.60	1.029	x70080050.60	1.030	x80190140.10	1.030
x55268110.10	1.029	x60180075.90	1.029	x70080140.10	1.029	x80200120.90	1.030
x55275110.10	1.029	x60180090.10	1.029	x70085135.10	1.029	x80200140.10	1.030
x55300110.10	1.029	x60190090.10	1.029	x70090100.60	1.030	x80210120.90	1.030
x55320110.10	1.029	x60200075.90	1.029	x70090140.10	1.029	x80220120.90	1.030
x55380110.10	1.029	x60200090.10	1.029	x70100140.10	1.029	x80250140.10	1.030
x55400110.10	1.029	x60220075.90	1.029	x70102135.10	1.030	x80260120.90	1.030
x55850110.10	1.029	x60230090.10	1.029	x70110140.10	1.030	x80265140.10	1.030
x56065040.40	1.026	x60240075.90	1.029	x70120140.10	1.030	x80280140.10	1.030
x56150100.40	1.029	x60250090.10	1.029	x70130100.60	1.030	x80300120.90	1.030
x59040064.40	1.026	x60260075.90	1.029	x70130140.10	1.030	x80300140.10	1.030
x59060064.40	1.026	x60280075.90	1.029	x70140140.10	1.030	x80320120.90	1.030
x59070055.60	1.026	x60280090.10	1.029	x70150100.60	1.030	x80350140.10	1.030
x59070064.40	1.026	x60300075.90	1.029	x70150140.10	1.030	x80360140.10	1.030
x59100065.40	1.026	x60300090.10	1.029	x70160100.60	1.030	x80380120.90	1.030
x60015090.10	1.029	x60320075.90	1.029	x70160140.10	1.030	x80400120.90	1.030
x60020025.60	1.031	x60350075.90	1.029	x70165140.10	1.030	x80400140.10	1.030
x60020075.90	1.029	x60350090.10	1.029	x70170140.10	1.030	x80800120.90	1.030
x60020090.10	1.029	x60370090.10	1.029	x70172140.10	1.030	x81127055.40	1.027
x60025090.10	1.029	x60380075.90	1.029	x70180100.10	1.030	x84070055.60	1.027
x60025100.60	1.029	x60400050.90	1.030	x70180140.10	1.030	x85120040.40	1.027
x60026090.10	1.029	x60400090.10	1.029	x70200140.10	1.030	x89085022.40	1.031
x60030075.90	1.029	x60500075.90	1.029	x70220140.10	1.030	x90090070.60	1.027
x60030090.10	1.029	x61070045.40	1.026	x70250140.10	1.030	x93025025.60	1.031
x60030100.60	1.029	x61105045.40	1.026	x70300140.10	1.030	x93120070.40	1.027
x60035090.10	1.029	x61135045.40	1.026	x75070020.60	1.031	x94120060.40	1.027
x60035100.60	1.029	x61150045.40	1.026	x75090060.40	1.027	x95020050.60	1.031
x60035100.90	1.029	x62076052.60	1.026	x7509504760	1.027	x95040072.40	1.027
x60040075.60	1.029	x62080047.40	1.026	x76070062.40	1.027	x95120035.40	1.027
x60040075.90	1.029	x62090056.40	1.026	x76110062.40	1.027	x95135060.40	1.027
x60040090.10	1.029	x62090062.40	1.026	x76135062.40	1.027	x95135072.40	1.027
x60040100.60	1.029	x62090065.40	1.026	x78120044.40	1.027	x98135058.40	1.027
x60045090.10	1.029	x62090070.40	1.026	x78120063.40	1.027	x98170058.40	1.027
x60045100.60	1.029	x62110065.40	1.026	x78135044.40	1.027	y20070103060	2.058
x60045100.90	1.029	x62120056.40	1.026	x79120050.40	1.027	y30080085060	2.058
x60050025.60	1.031	x62120065.40	1.026	x79120052.40	1.027		
x60050050.10	1.030	x63101045.40	1.026	x80030100.10	1.030		
x60050075.90	1.029	x63105049.40	1.026	x80030120.90	1.030		
x60050090.10	1.029	x63105056.40	1.026	x80030140.10	1.030		
x60050100.60	1.029	x63120040.40	1.026	x80035140.10	1.030		
x60050145.10	1.029	x63127043.40	1.026	x80040120.90	1.030		
x60053090.10	1.029	x63135041.40	1.026	x80040140.10	1.030		
x60055090.10	1.029	x64060040.40	1.026	x80045140.10	1.030		
x60055100.90	1.029	x64063050.60	1.026	x80050050.60	1.030		
x60060075.90	1.029	x64080050.40	1.026	x80050100.90	1.030		
x60060090.10	1.029	x64095040.40	1.026	x80050120.90	1.030		
x60060100.60	1.029	x64095050.40	1.026	x80050140.10	1.030		
x60065090.10	1.029	x64120042.40	1.026	x80050160.90	1.030		
x60070075.90	1.029	x64120050.40	1.026	x80060120.90	1.030		